

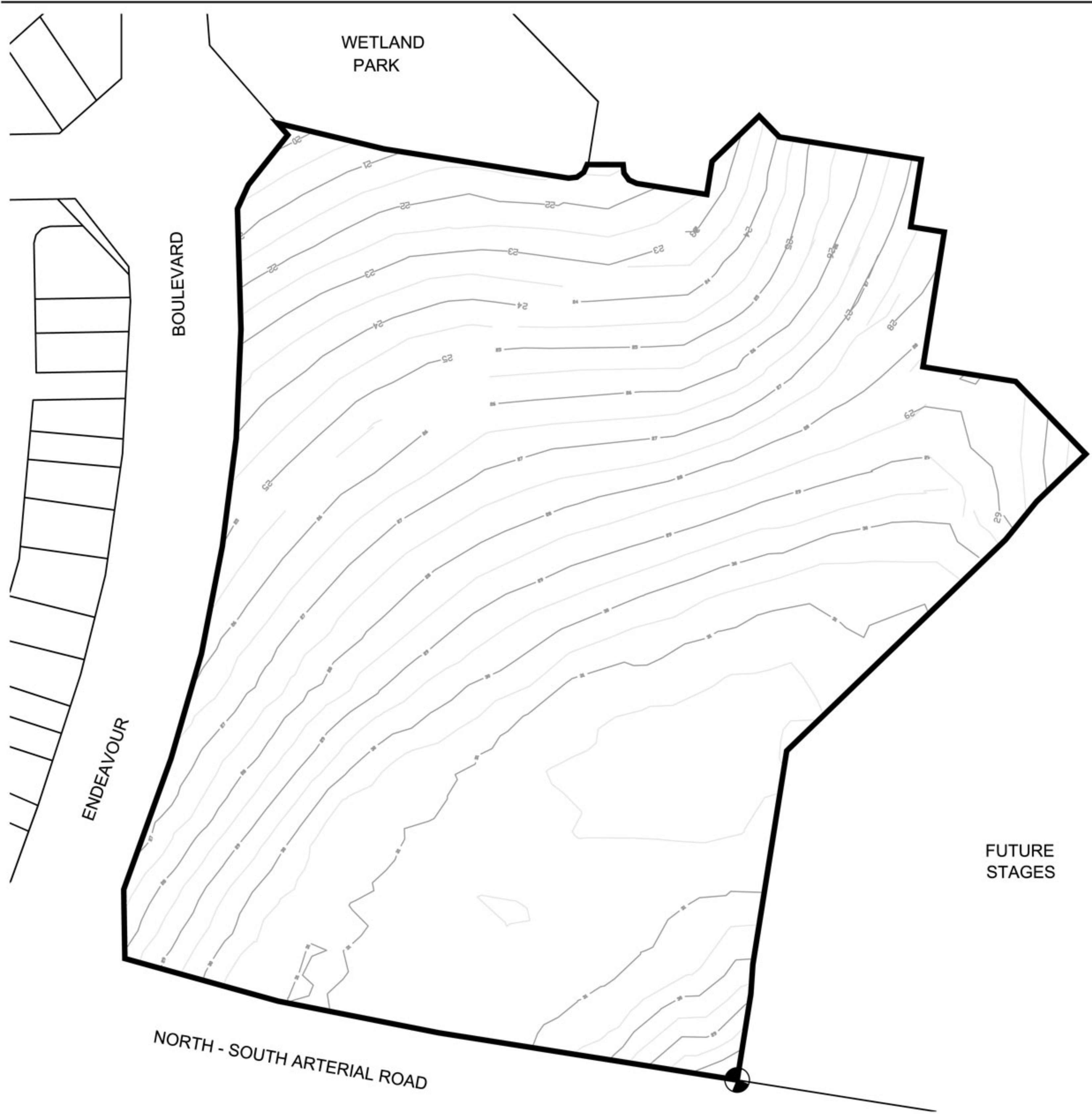
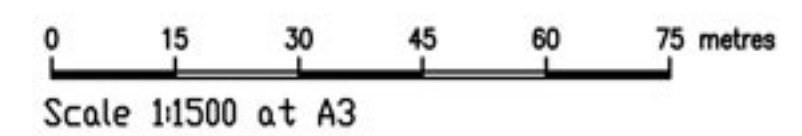


LEGEND

 Point of Commencement
AMG Coordinates (Zone 56)
Easting 500798.819
Northing 6988133.187

See Annexure A1 for Metes and Bounds description
Urban Residential Element

 Existing Contours (1m Interval)

**SOUTHERN GOLF SECTOR 61****CADASTRAL BOUNDARY PLAN**

File No 2836-SG
Dwg SGr61Fig3
May 2010