

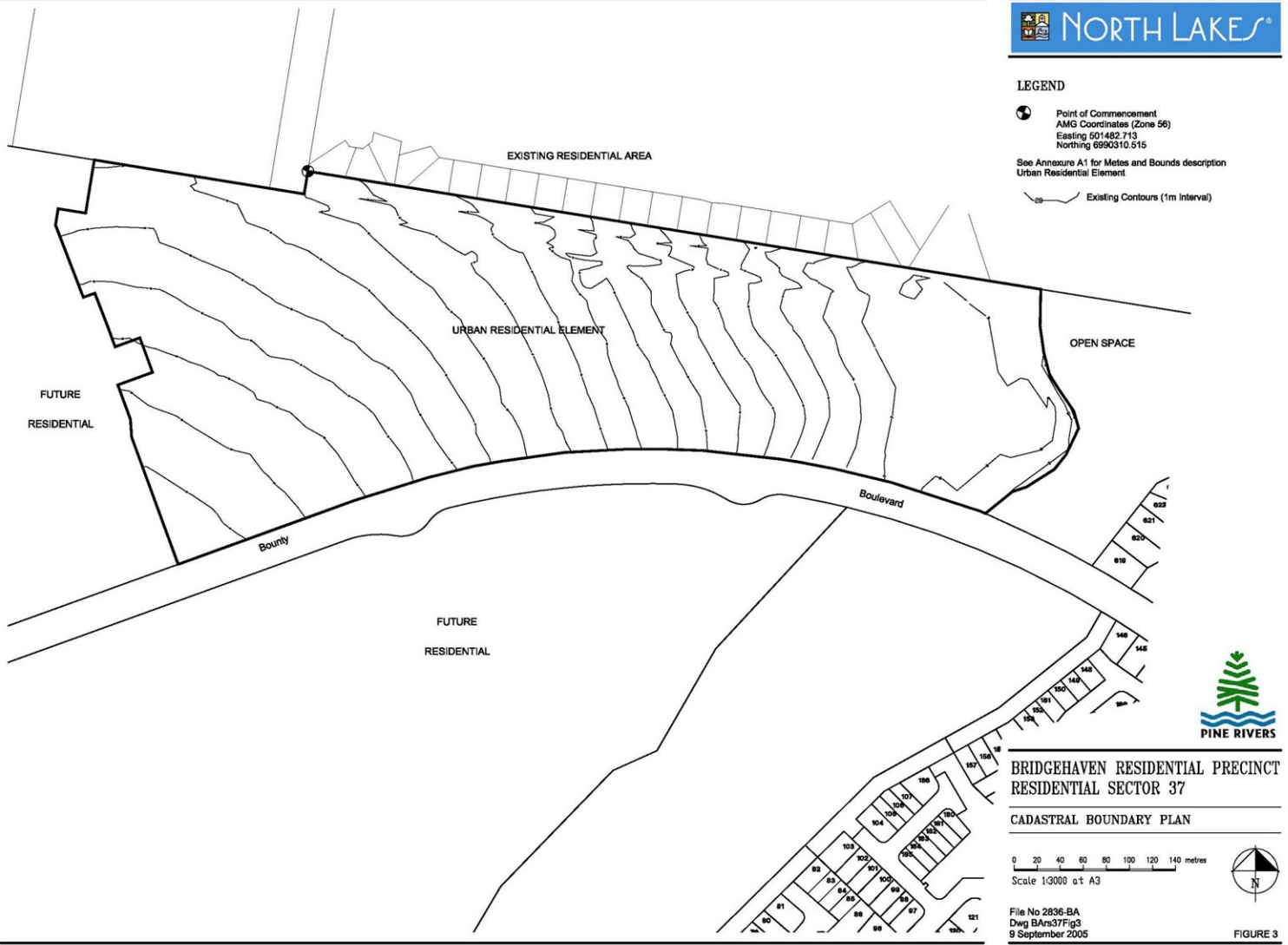


**LEGEND**

-  Point of Commencement  
AMC Coordinates (Zone 56)  
Easting 501482.713  
Northing 6990310.515
- See Annexure A1 for Metes and Bounds description  
Urban Residential Element
-  Existing Contours (1m interval)



**BRIDGEHAVEN RESIDENTIAL PRECINCT  
RESIDENTIAL SECTOR 37**

**CADASTRAL BOUNDARY PLAN**

0 20 40 60 80 100 120 140 metres  
Scale 1:3000 at A3

File No 2836-BA  
Dwg BArs37Fig3  
9 September 2005

