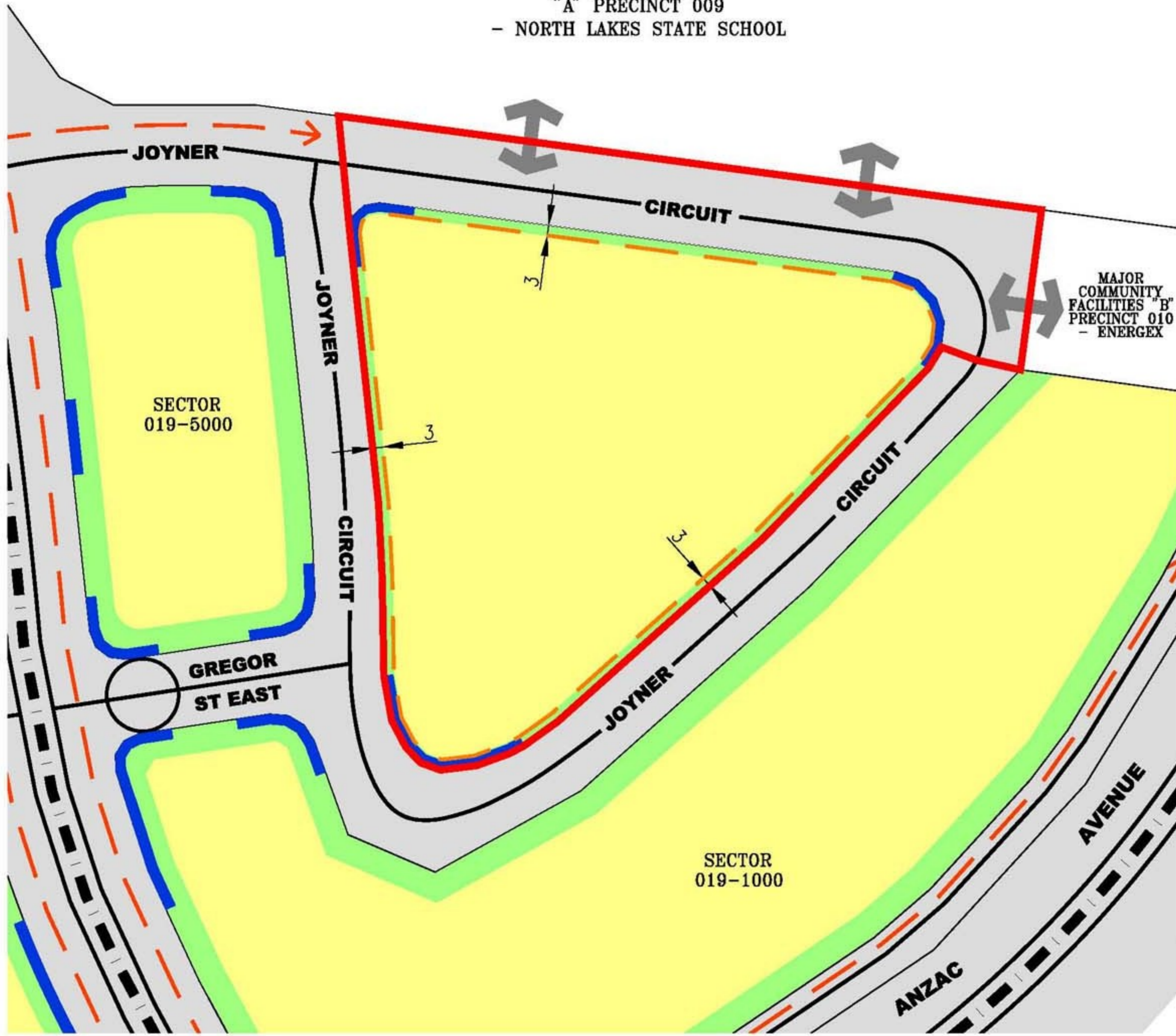


MAJOR COMMUNITY FACILITIES
 "A" PRECINCT 009
 - NORTH LAKES STATE SCHOOL



- LEGEND**
- LOCATION OF COMBINED CAR PARKING & BUILDING AREA
 - SECTOR BOUNDARY
 - EXISTING TRAFFIC LIGHTS
 - MAJOR PATHS
 - MAJOR ROADS
 - SECONDARY ACCESS ROAD (COLLECTOR ACCESS ROAD)
 - EXISTING APPROVED VEHICULAR ACCESS (REFER ADJOINING PRECINCT PLAN)
 - INDICATIVE BUS ROUTE OPTIONS
 - RESTRICTED TURN MOVEMENTS ONTO DISCOVERY DRIVE
 - NO VEHICULAR ACCESS PERMITTED
 - NORTH LAKES ENTRY STATEMENT
 - LANDSCAPE FRONTAGE TREATMENT INCLUDING LANDSCAPING, PARKING, LIGHTING & STREET PLANTING
 - BUILDING LINE



Town Centre Frame 'C' Precinct
 Town Centre Frame 'C' Sector Eight
 SECTOR PLAN MAP

