

LEGEND

- Water Main – Works by Principal Developer
- Water Main – External Prepayment Works
- Water Main – Works by others or existing
- Node Number
- DCP Area Boundary
- Generalised Sector Area

PRINCIPAL DEVELOPER WORKS

NODE	DIAMETER (mm)
32 to 83Z	300
83Z to 83D	300
83Z to 83C	375
83D to 83H	375
83D to 83E	750
83C to 89	916
83C to 83E	750
83E to 83I	375
83I to 83H	300
83I to 83M	300
83H to 83X	300
83X to 83N	300
83E to 83P	450
83P to 83A	664
83P to 83Q	500
83Q to 83R	300
83M to 83Q	450
83X to 83M	300

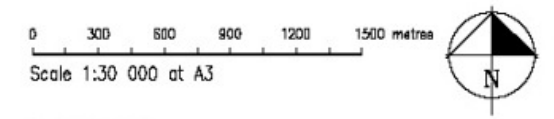
EXTERNAL PREPAYMENT WORKS

ITEM	LOCATION (Node)	DESCRIPTION
A	LEIS RD (11-127)	664mm MAIN
B	ANZAC AVE (127-20)	600mm MAIN
C	BOUNDARY RD (8)	RESERVIOR 32MI - STAGE 1
D	BOUNDARY RD (8)	RESERVIOR 32MI - STAGE 2



**WOODSIDE RESIDENTIAL PRECINCT
RESIDENTIAL SECTOR 33**

WATER SUPPLY HEADWORKS



File No 2836-tp1
Dwg tp1rs33Fig9
October 2003

FIGURE 8