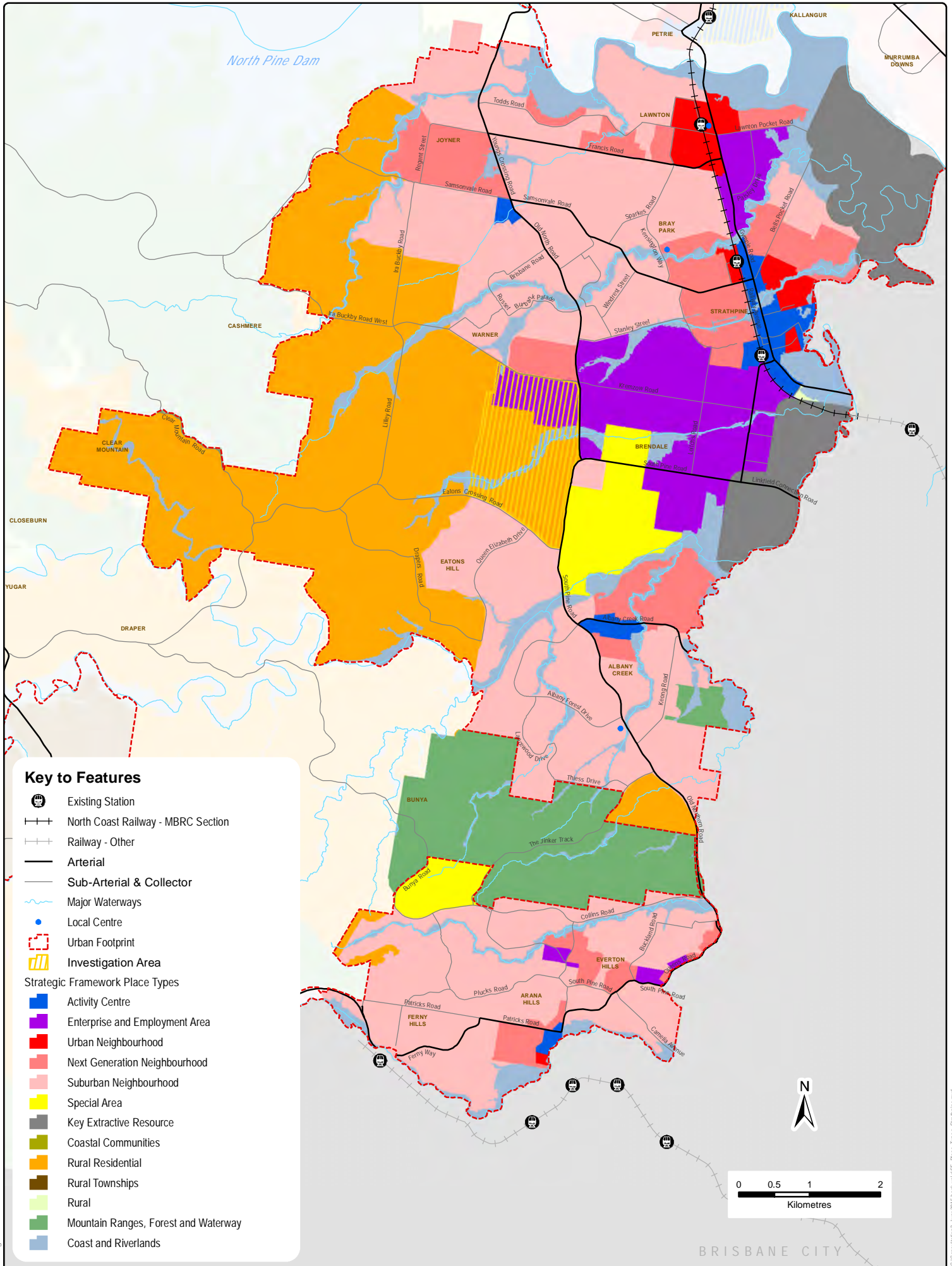


PLACE TYPES - STRATHPINE PLANNING AREA

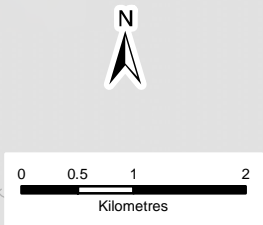
MORETON BAY REGION - STRATEGIC FRAMEWORK - Map 3.13.4

Effective from 1 February 2016



Key to Features

- Existing Station
- North Coast Railway - MBRC Section
- Railway - Other
- Arterial
- Sub-Arterial & Collector
- Major Waterways
- Local Centre
- Urban Footprint
- Investigation Area
- Strategic Framework Place Types**
- Activity Centre
- Enterprise and Employment Area
- Urban Neighbourhood
- Next Generation Neighbourhood
- Suburban Neighbourhood
- Special Area
- Key Extractive Resource
- Coastal Communities
- Rural Residential
- Rural Townships
- Rural
- Mountain Ranges, Forest and Waterway
- Coast and Riverlands



BRISBANE CITY

Copyright Moreton Bay Regional Council and The Queensland Government. Moreton Bay Regional Council supplies this map under the following conditions: Mapping details are supplied from information contained in the Council's records which may have been furnished to the Council by other persons. Moreton Bay Regional Council gives no warranty or guarantee of any kind, expressed, implied, or statutory, to the correctness or accuracy of the map details or the degree of compliance with any Council standards in this matter. Persons making decisions with financial or legal implications must rely upon the map details shown on this plan for the purpose of determining whether any particular facts or circumstances exist and the Moreton Bay Regional Council (and its officers and agents) expressly disclaims responsibility for any loss or damage suffered as a result of placing reliance upon this information.