

ITEM 3.11 WYLLIE PARK - HERITAGE MASTER PLAN ENDORSEMENT - DIVISIONAL - A20069695 (Cont.)

#1 Wyllie Park Heritage Master Plan

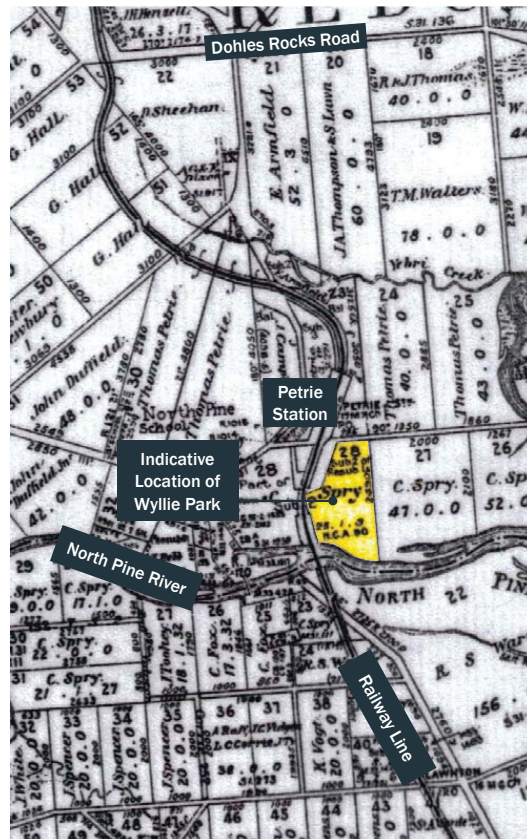


www.moretonbay.qld.gov.au | Phone 3205 0555



HISTORY OF THIS LANDSCAPE

Heritage Touchstones



SUBDIVISION OF PORTION 28 (CIRCA 1930)

The area now known as Wyllie Park was part of the large subdivision of Portion 28 **purchased by Wyllie in 1883**.

It is likely that Wyllie Park itself **grew organically as a rest area** following the opening of the A.J. Wyllie Bridge in 1937.

It is unclear if the Petrie rest area was specifically acquired by Main Roads for the purposes of establishing a rest reserve for motorists, or if it was a location that was used organically by those passing by [...] travelling between Brisbane and the northern coast area, prior to the 1950s.

Since the 1990s, Wyllie Park has seen several [...] upgrades and additions of amenities such as picnic tables, play equipment, gazebos and exercise equipment. A **number of early tree plantings removed** [...] however recent plantings have been replicated in the **concentric pattern**.

An extensive **tree replacement program** was undertaken between 1996 and 2000 to address **safety issues** associated with failed trees.

[Historic analysis & aerial images] show that it is unlikely a masterplan existed for Wyllie Park in the 1950s.

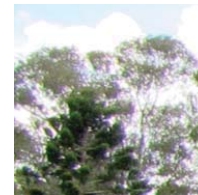
(Extracts from Wyllie Park, Petrie Conservation Management Plan For Moreton Bay Regional Council October 2018)

SIGNIFICANCE OF PLACE

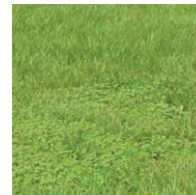


AERIAL PHOTOGRAPH 2019

foliage and floral trees



lush lawns



rough hewn timber



servicable paving



mature canopies



historic markers



Wyllie Park Heritage Master Plan: Design Rationale

PLACE ASPIRATIONS



Interpretation

Interpreting the many layers of this place through a physically expressed timeline. Mimicking the circularity of the design, the timeline will recall the key dates and characters influencing this place. The heritage values will be enhanced.



Reconstruction

The proposed design reinstates several of the iconic *Araucaria* and *Largostreomea* species in a circular formation. This will instil an inherent strength and presence seen from Gympie Road and enhance the ecological value.



Providing for the Future

Tech modernity meets the heritage values in provision for a travel rest stop of the future. Ensuring visitors can connect to the wider world and get to their next destination. Provision of facilities including toilets and other facilities.



Road Side Rest Reserve

A constellation of places set amongst mature and newly planted trees. Picnic spots, BBQs, tables, grassy lawns & playground where families can enjoy a rest together.

ITEM 3.11 WYLLIE PARK - HERITAGE MASTER PLAN ENDORSEMENT - DIVISIONAL - A20069695 (Cont.)

SLASH PINES: HEALTH AND LIFESPAN

Pinus elliottii was chosen as a mass planting species in the 1940s. Surviving only 200 years in optimal conditions, it is one of the shortest-lived pine species.

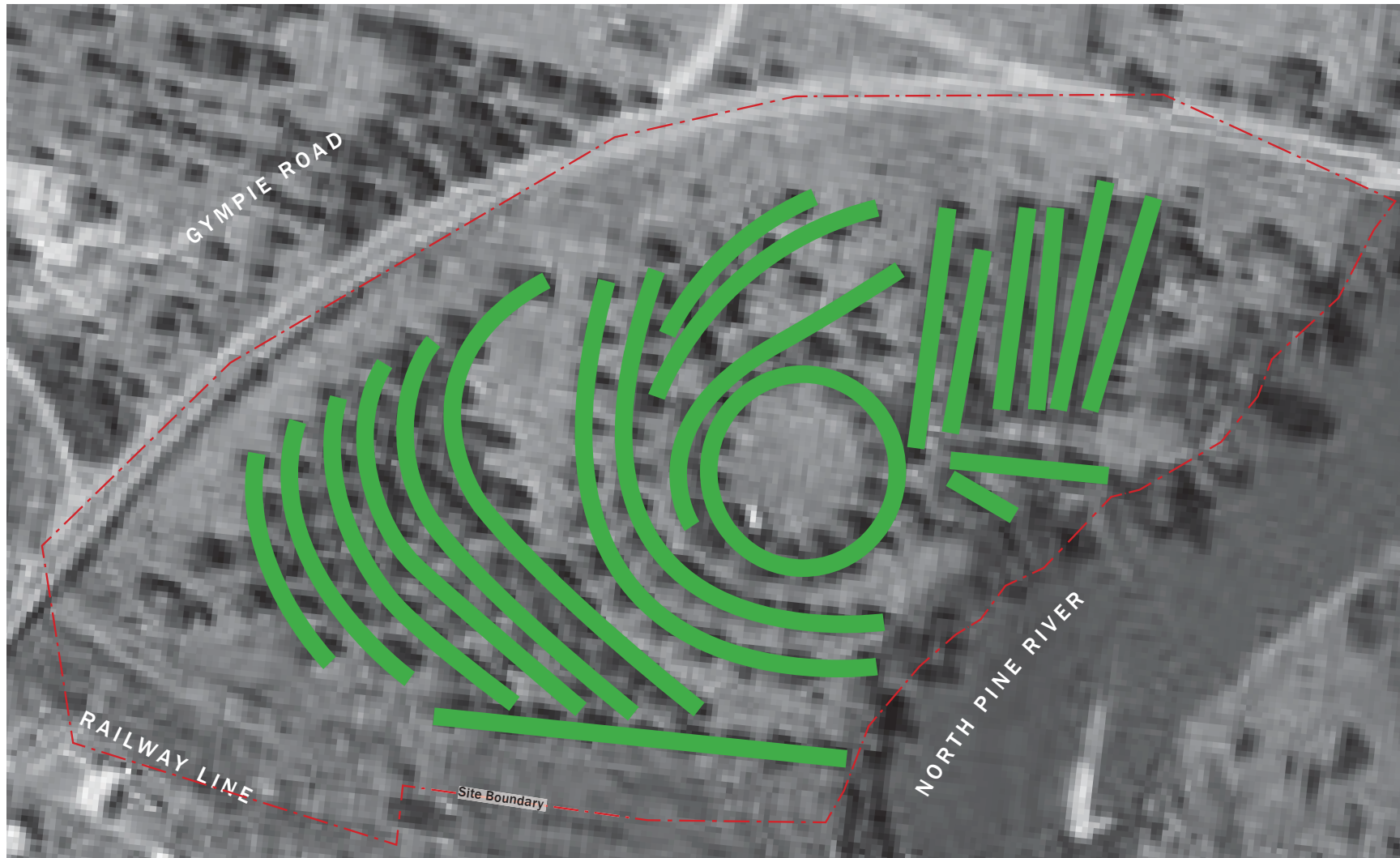
As a rest stop, cars have been driving on the root structure zones. Soil compaction has impacted the health of the trees by restricting water and nutrients. These factors are likely to have led to compromised health of the pines and thus their required premature removal for the safety of the occupants of the park.

The proposed design seeks to reinstate the planting arrangement using a hardier species and protective measures.



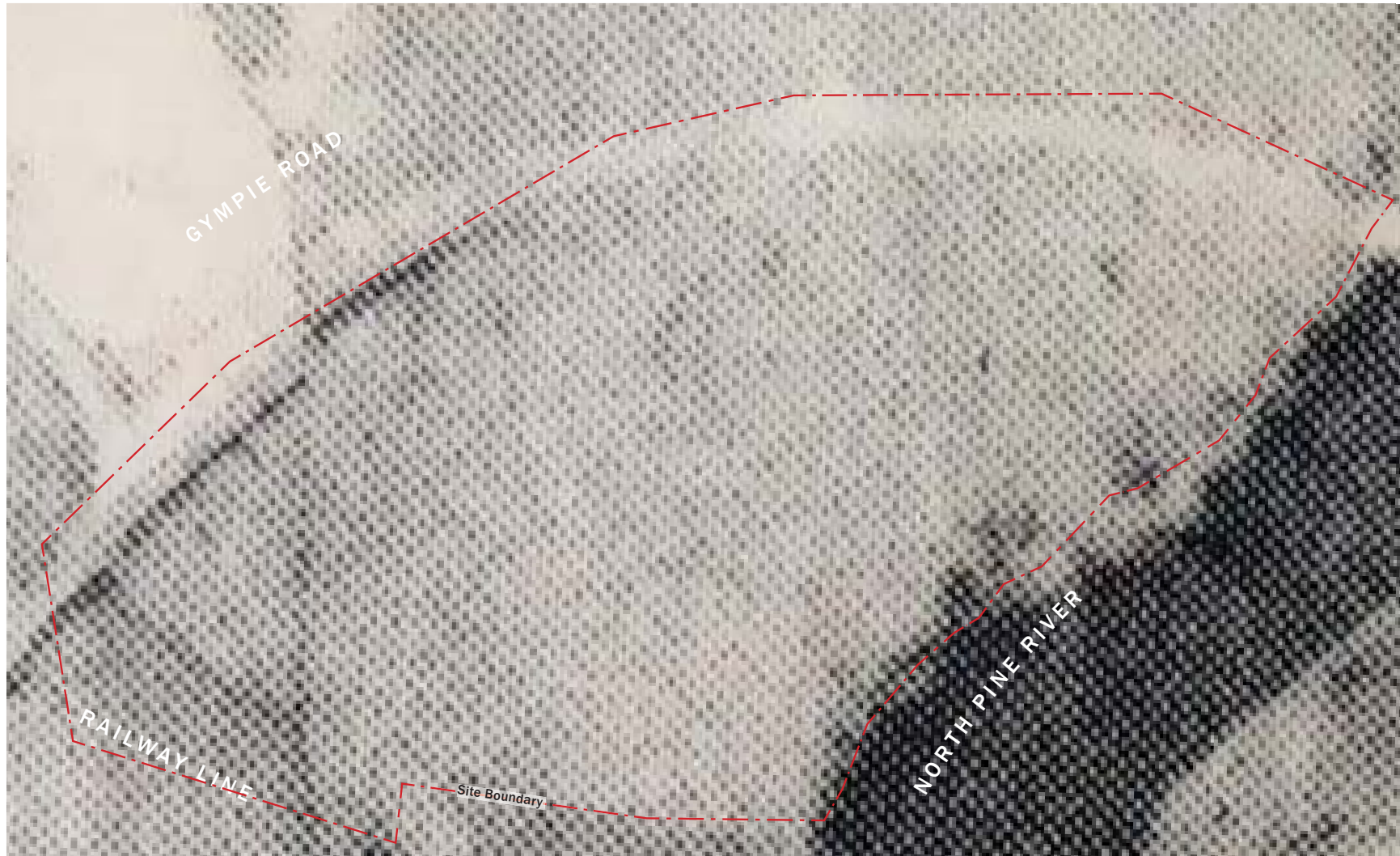
ITEM 3.11 WYLLIE PARK - HERITAGE MASTER PLAN ENDORSEMENT - DIVISIONAL - A20069695 (Cont.)

SLASH PINE PLANTING ARRANGEMENT, 1955



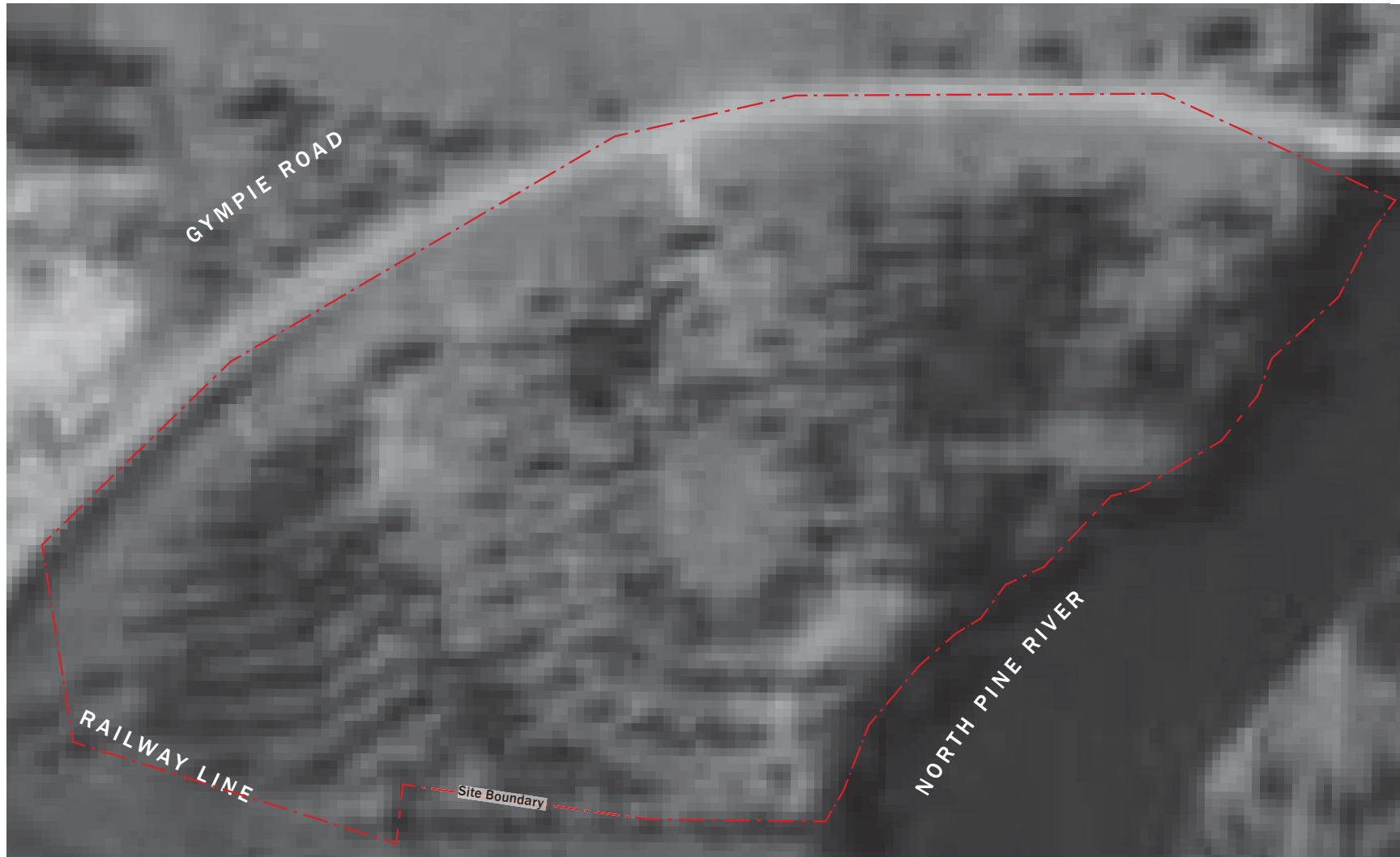
ITEM 3.11 WYLLIE PARK - HERITAGE MASTER PLAN ENDORSEMENT - DIVISIONAL - A20069695 (Cont.)

AERIAL PHOTO OF WYLLIE PARK, 1943



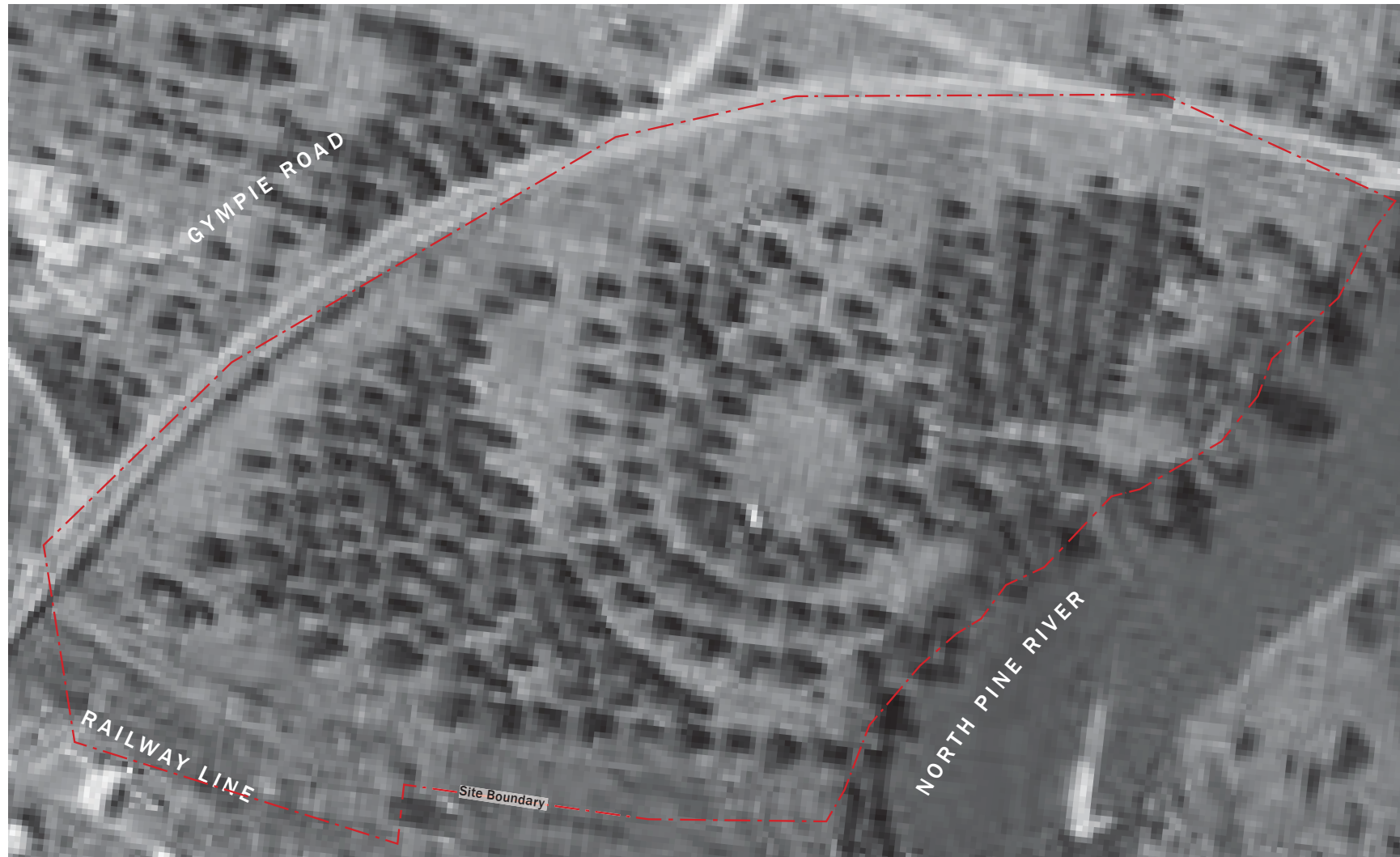
ITEM 3.11 WYLLIE PARK - HERITAGE MASTER PLAN ENDORSEMENT - DIVISIONAL - A20069695 (Cont.)

AERIAL PHOTO OF WYLLIE PARK, 1949



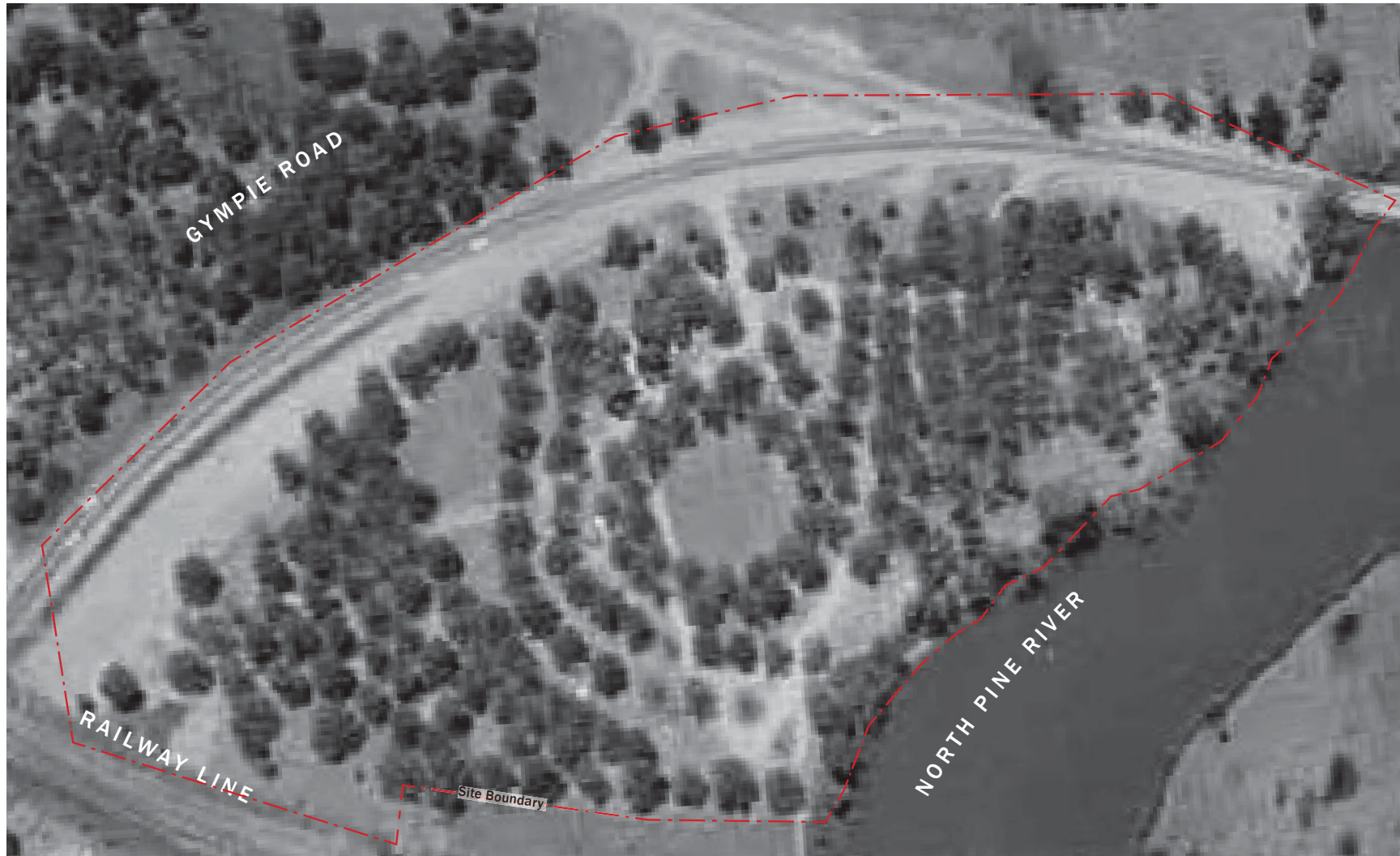
ITEM 3.11 WYLLIE PARK - HERITAGE MASTER PLAN ENDORSEMENT - DIVISIONAL - A20069695 (Cont.)

AERIAL PHOTO OF WYLLIE PARK, 1955



ITEM 3.11 WYLLIE PARK - HERITAGE MASTER PLAN ENDORSEMENT - DIVISIONAL - A20069695 (Cont.)

AERIAL PHOTO OF WYLLIE PARK, 1969



ITEM 3.11 WYLLIE PARK - HERITAGE MASTER PLAN ENDORSEMENT - DIVISIONAL - A20069695 (Cont.)

AERIAL PHOTO OF WYLLIE PARK, 1984



ITEM 3.11 WYLLIE PARK - HERITAGE MASTER PLAN ENDORSEMENT - DIVISIONAL - A20069695 (Cont.)

AERIAL PHOTO OF WYLLIE PARK, 1994



ITEM 3.11 WYLLIE PARK - HERITAGE MASTER PLAN ENDORSEMENT - DIVISIONAL - A20069695 (Cont.)

AERIAL PHOTO OF WYLLIE PARK, 1998



ITEM 3.11 WYLLIE PARK - HERITAGE MASTER PLAN ENDORSEMENT - DIVISIONAL - A20069695 (Cont.)

AERIAL PHOTO OF WYLLIE PARK, 2006



ITEM 3.11 WYLLIE PARK - HERITAGE MASTER PLAN ENDORSEMENT - DIVISIONAL - A20069695 (Cont.)

AERIAL PHOTO OF WYLLIE PARK, 2017



ITEM 3.11 WYLLIE PARK - HERITAGE MASTER PLAN ENDORSEMENT - DIVISIONAL - A20069695 (Cont.)

MASTER PLAN STRUCTURE

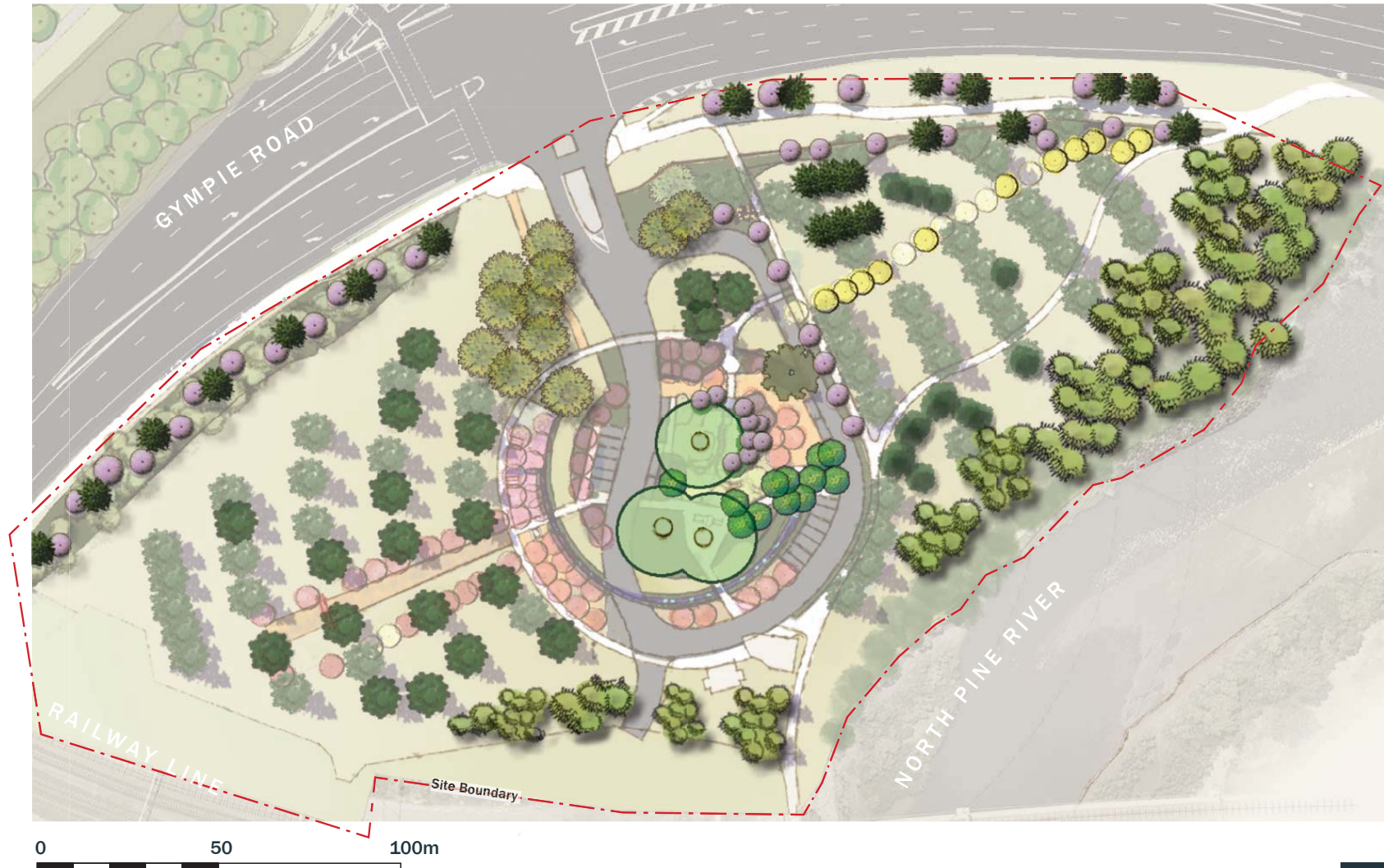
Maintaining and Enhancing Heritage Values: Existing Trees



ITEM 3.11 WYLLIE PARK - HERITAGE MASTER PLAN ENDORSEMENT - DIVISIONAL - A20069695 (Cont.)

MASTER PLAN STRUCTURE

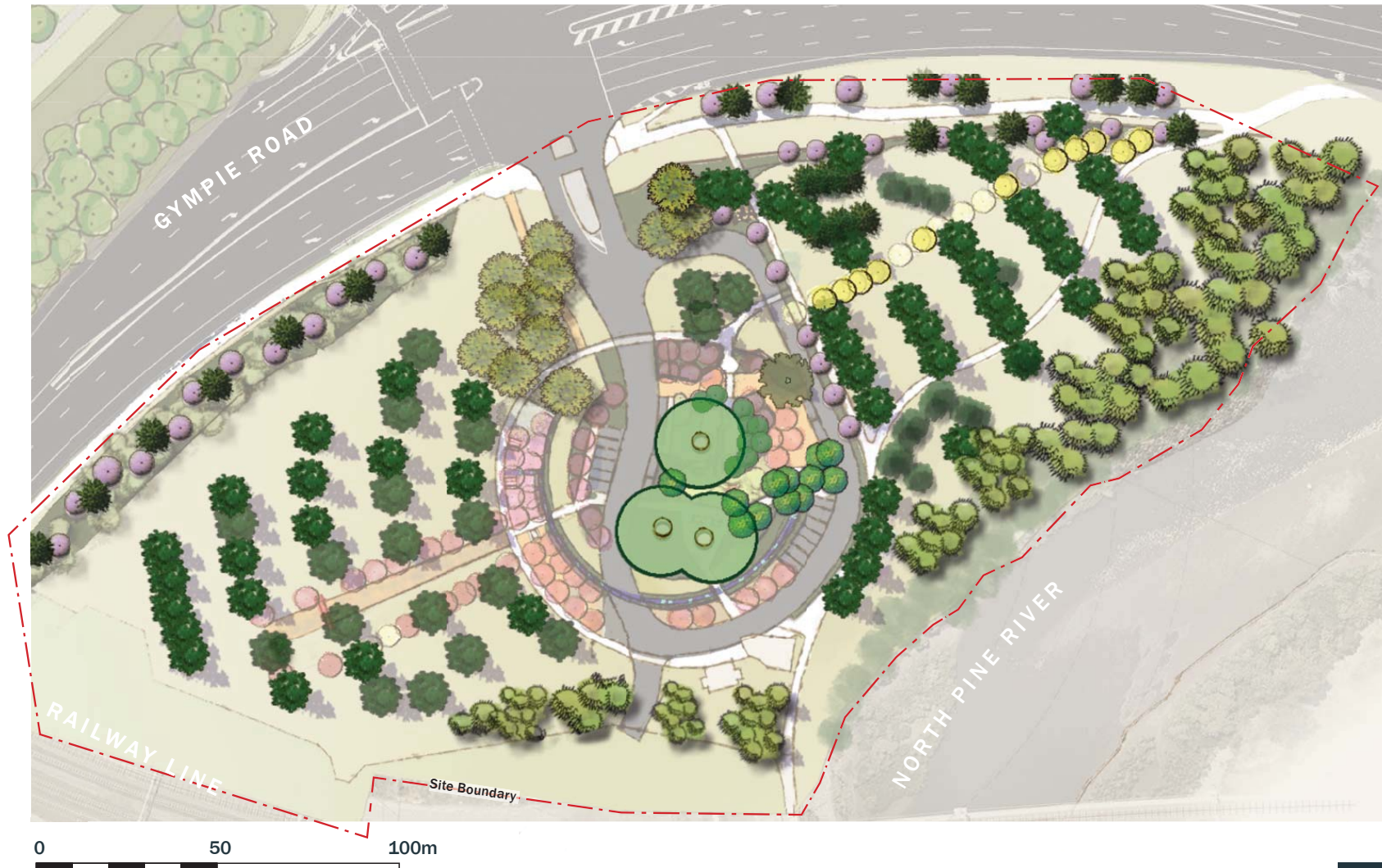
Maintaining and Enhancing Heritage Values: Proposed Kauri Pine & Crepe Myrtle Plantings



ITEM 3.11 WYLLIE PARK - HERITAGE MASTER PLAN ENDORSEMENT - DIVISIONAL - A20069695 (Cont.)

MASTER PLAN STRUCTURE

Reinstatement of Significant Features which have been Lost: Proposed Infill Planting



ITEM 3.11 WYLLIE PARK - HERITAGE MASTER PLAN ENDORSEMENT - DIVISIONAL - A20069695 (Cont.)

MASTER PLAN STRUCTURE

Reinstatement of Significant Features which have been Lost: Proposed Infill Planting at Maturity



ITEM 3.11 WYLLIE PARK - HERITAGE MASTER PLAN ENDORSEMENT - DIVISIONAL - A20069695 (Cont.)

MASTER PLAN STRUCTURE

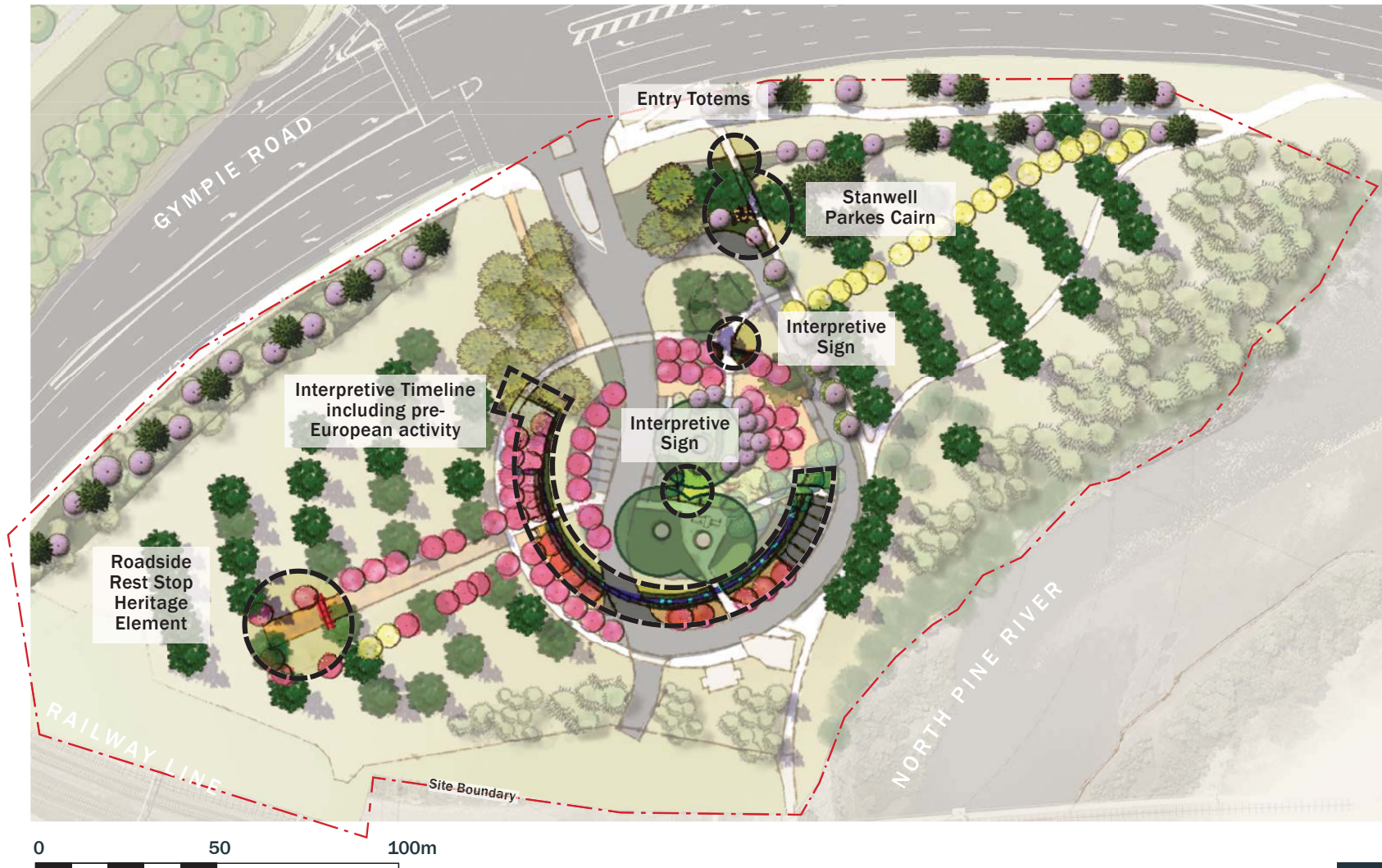
Maintaining Use and Enhancing the Significance of the Place: Proposed Complementary Planting



ITEM 3.11 WYLLIE PARK - HERITAGE MASTER PLAN ENDORSEMENT - DIVISIONAL - A20069695 (Cont.)

MASTER PLAN STRUCTURE

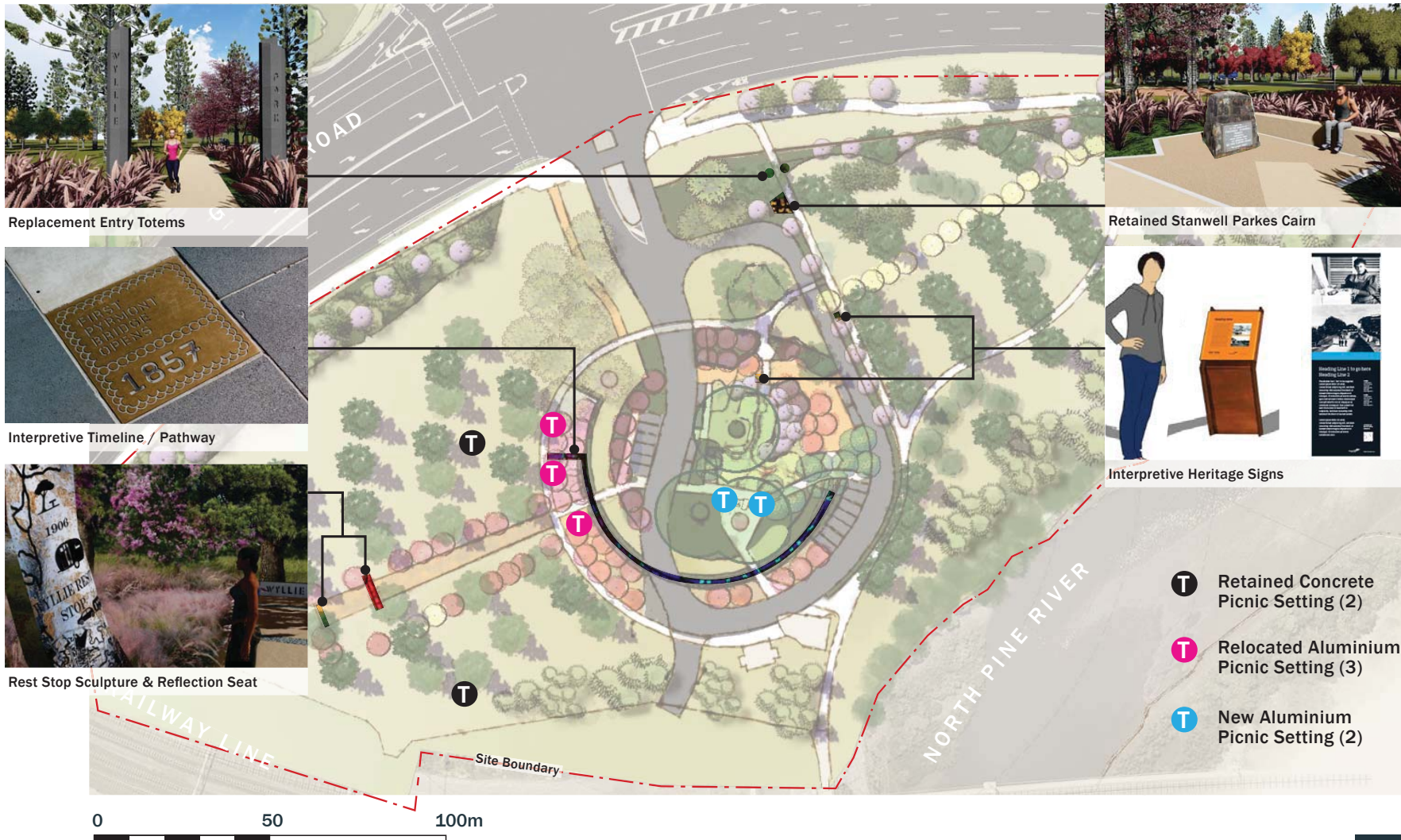
Interpretation of Heritage Values: Potential Opportunities to Interpret History of Place



ITEM 3.11 WYLLIE PARK - HERITAGE MASTER PLAN ENDORSEMENT - DIVISIONAL - A20069695 (Cont.)

MASTER PLAN STRUCTURE

Interpretation of Heritage Values: Heritage Picnic Settings & Interpretive Heritage Elements



Replacement Entry Totems

Retained Stanwell Parkes Cairn

Interpretive Timeline / Pathway

Interpretive Heritage Signs

Rest Stop Sculpture & Reflection Seat

T Retained Concrete Picnic Setting (2)

T Relocated Aluminium Picnic Setting (3)

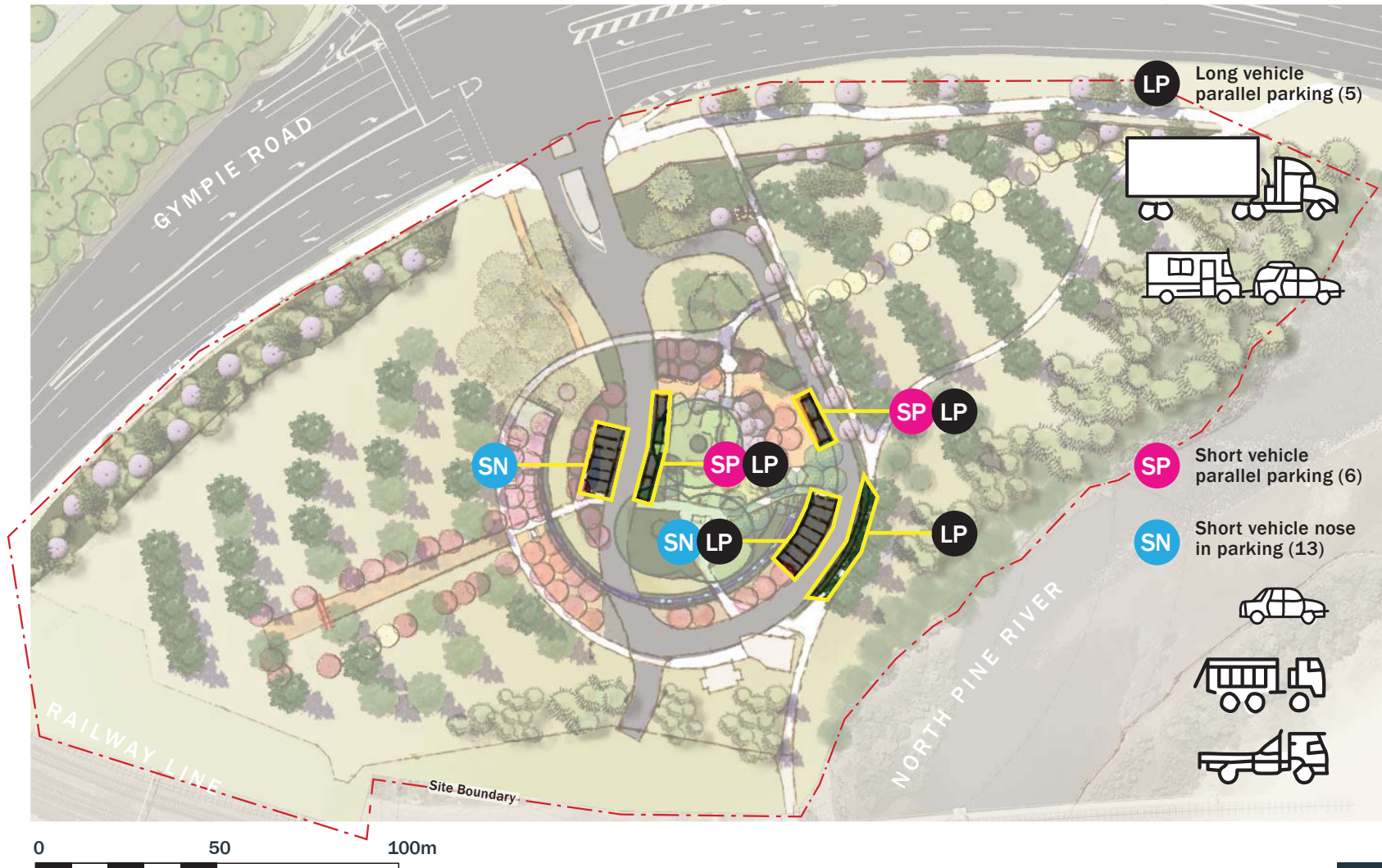
T New Aluminium Picnic Setting (2)



ITEM 3.11 WYLLIE PARK - HERITAGE MASTER PLAN ENDORSEMENT - DIVISIONAL - A20069695 (Cont.)

MASTER PLAN STRUCTURE

Heritage Rest Stop Values: Location & Number of Short and Long Vehicle Car Parks



ITEM 3.11 WYLLIE PARK - HERITAGE MASTER PLAN ENDORSEMENT - DIVISIONAL - A20069695 (Cont.)

MASTER PLAN CONCEPT

Maintaining and Enhancing Wyllie Park as a Notable Road Side Rest Area of State Significance



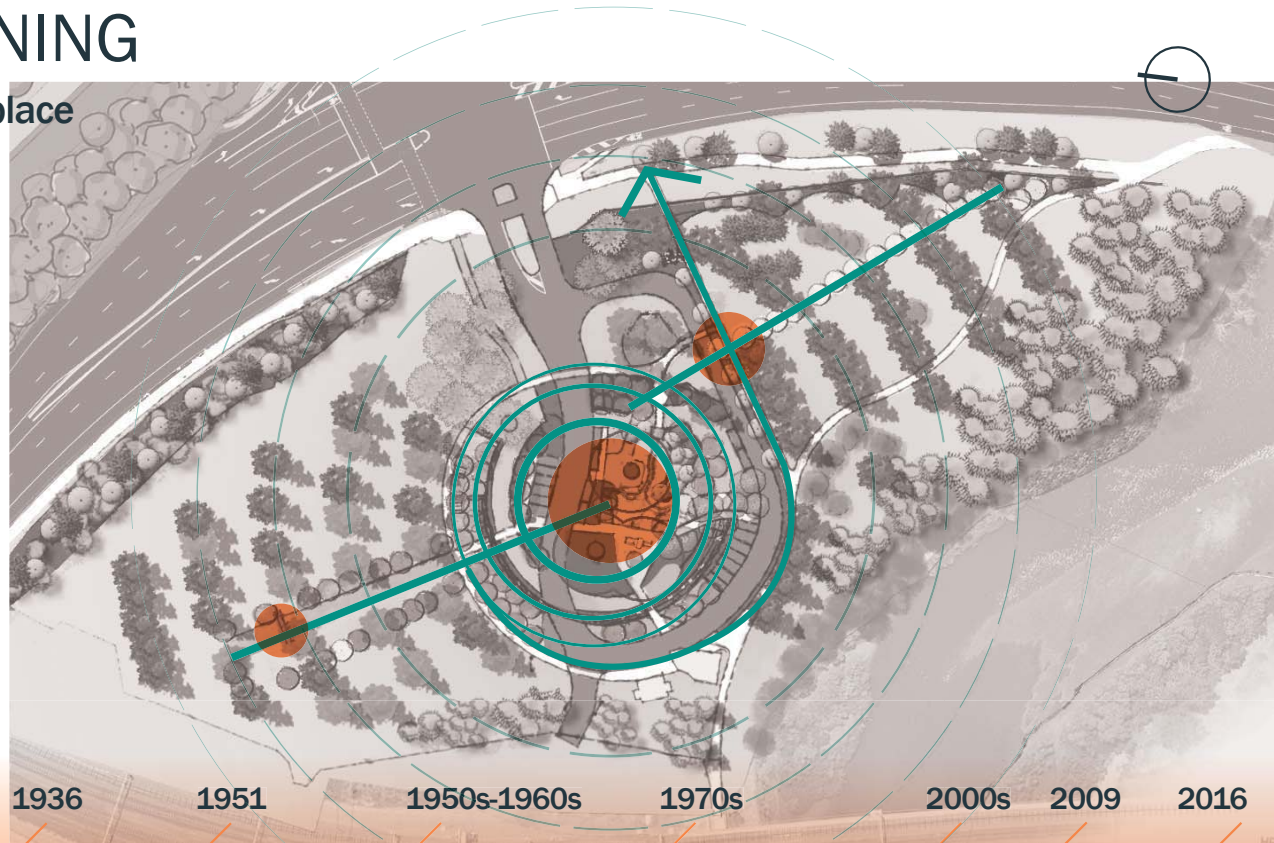
ITEM 3.11 WYLLIE PARK - HERITAGE MASTER PLAN ENDORSEMENT - DIVISIONAL - A20069695 (Cont.)

EMBEDDED MEANING

Reflecting the timeline of this place

An Interpretation Strategy will be finalised in accordance with Policy 31 and 32 or the Conservation Management Plan (CMP) to ensure the heritage significant of the place is focussed on key historic themes.

The design captures the essential historical touchstones of this park. This will reflect the park's relationship to the road alignment, use as a rest area, relationship to traditional owners, Petrie and surrounding elements.



Alexander Wyllie purchased Riverleigh, including c.50 acres.

Wyllie's eastern paddocks used for agriculture shows.

AJ Wyllie Bridge opened.

North Pine Rest Area listed by Main Roads. Entrance to middle of central ring.

Evidence of a range of planting programs.

Frederick Stanwell Parkes memorial cairn installed.

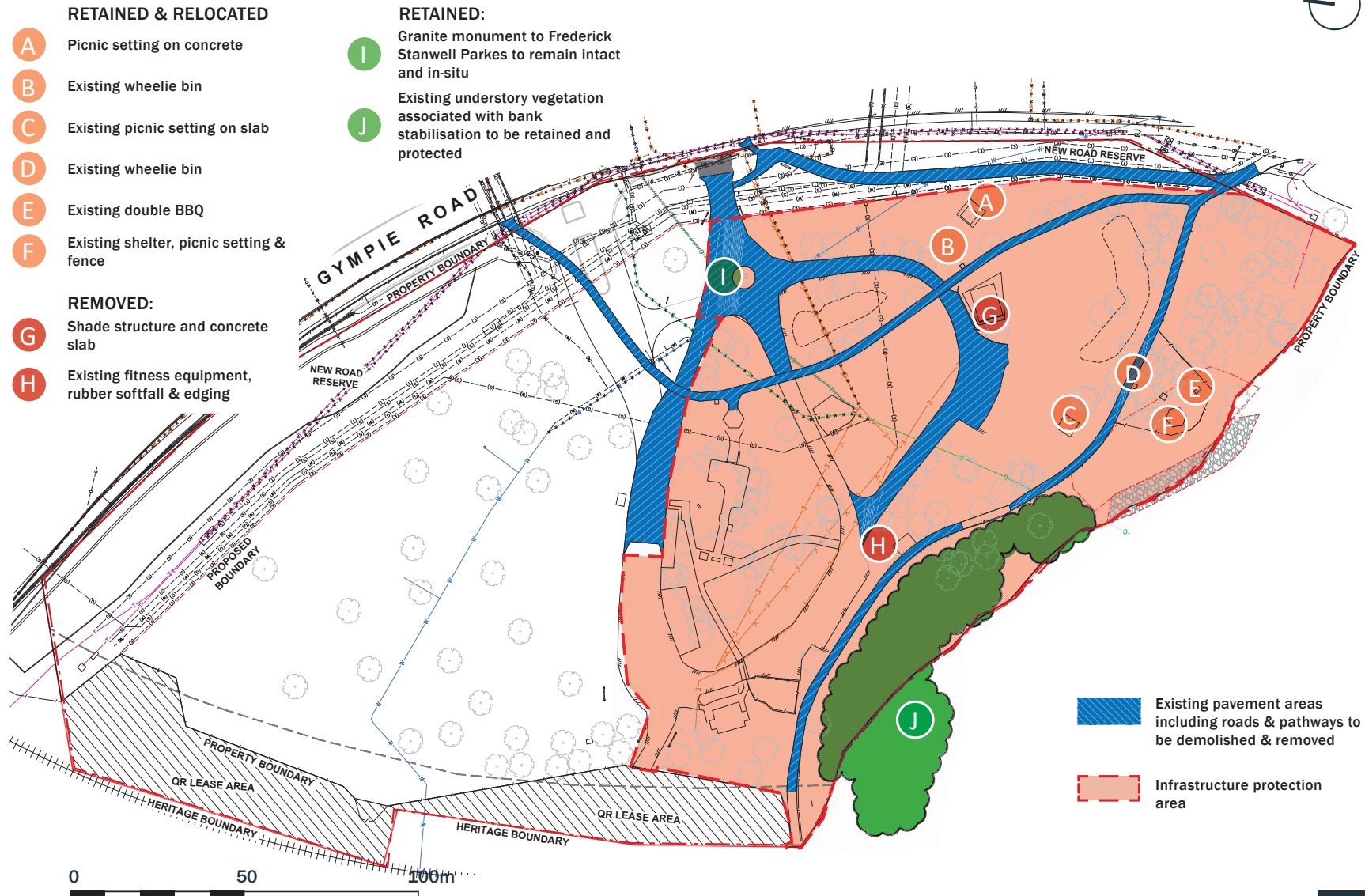
Upgrades and installments of amenities and plantings.

Wyllie Park entered on Heritage Register.

Petrie Mill development begins.

ITEM 3.11 WYLLIE PARK - HERITAGE MASTER PLAN ENDORSEMENT - DIVISIONAL - A20069695 (Cont.)

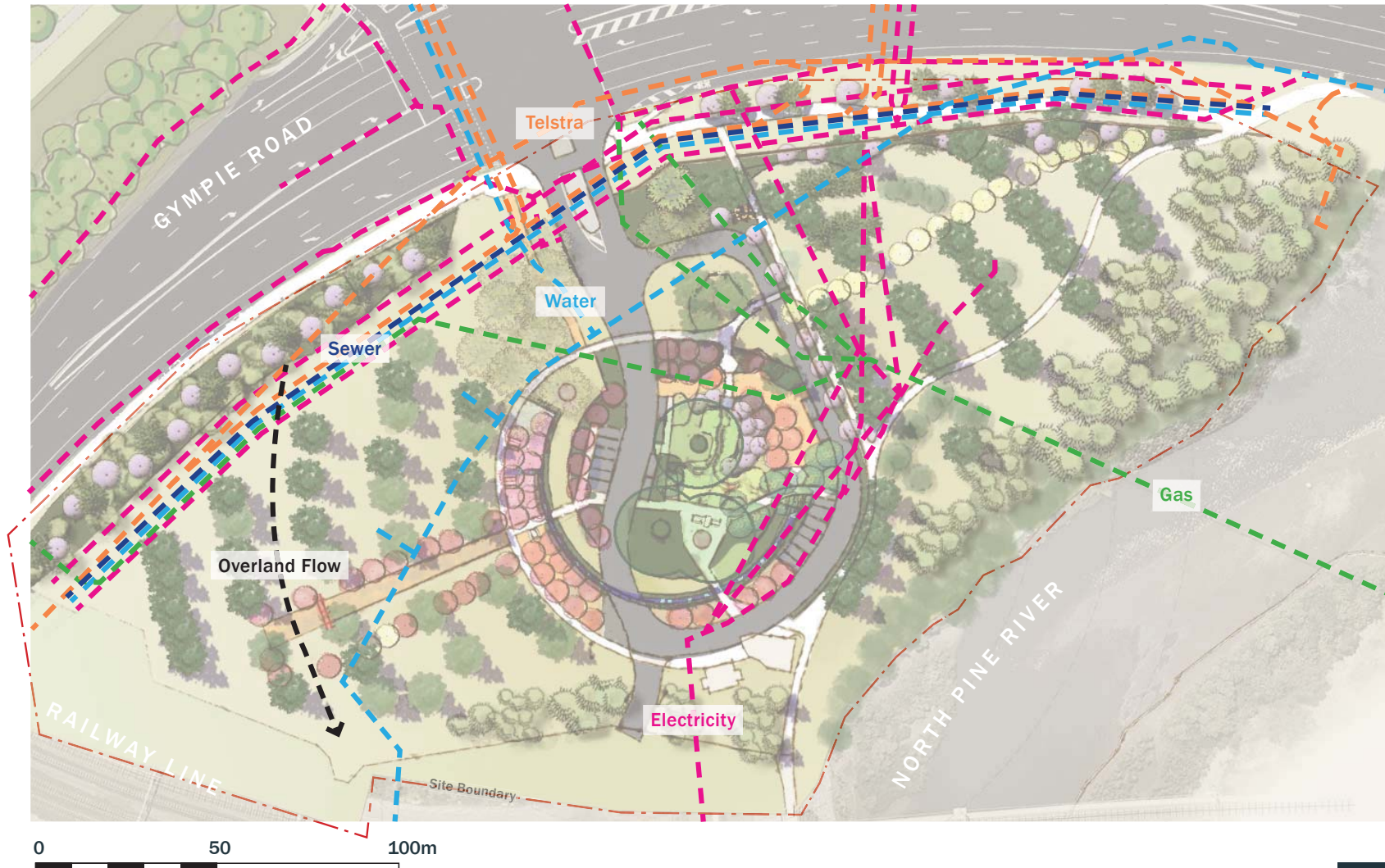
REMOVED & RETAINED LANDSCAPE ELEMENTS



ITEM 3.11 WYLLIE PARK - HERITAGE MASTER PLAN ENDORSEMENT - DIVISIONAL - A20069695 (Cont.)

MASTER PLAN SERVICES

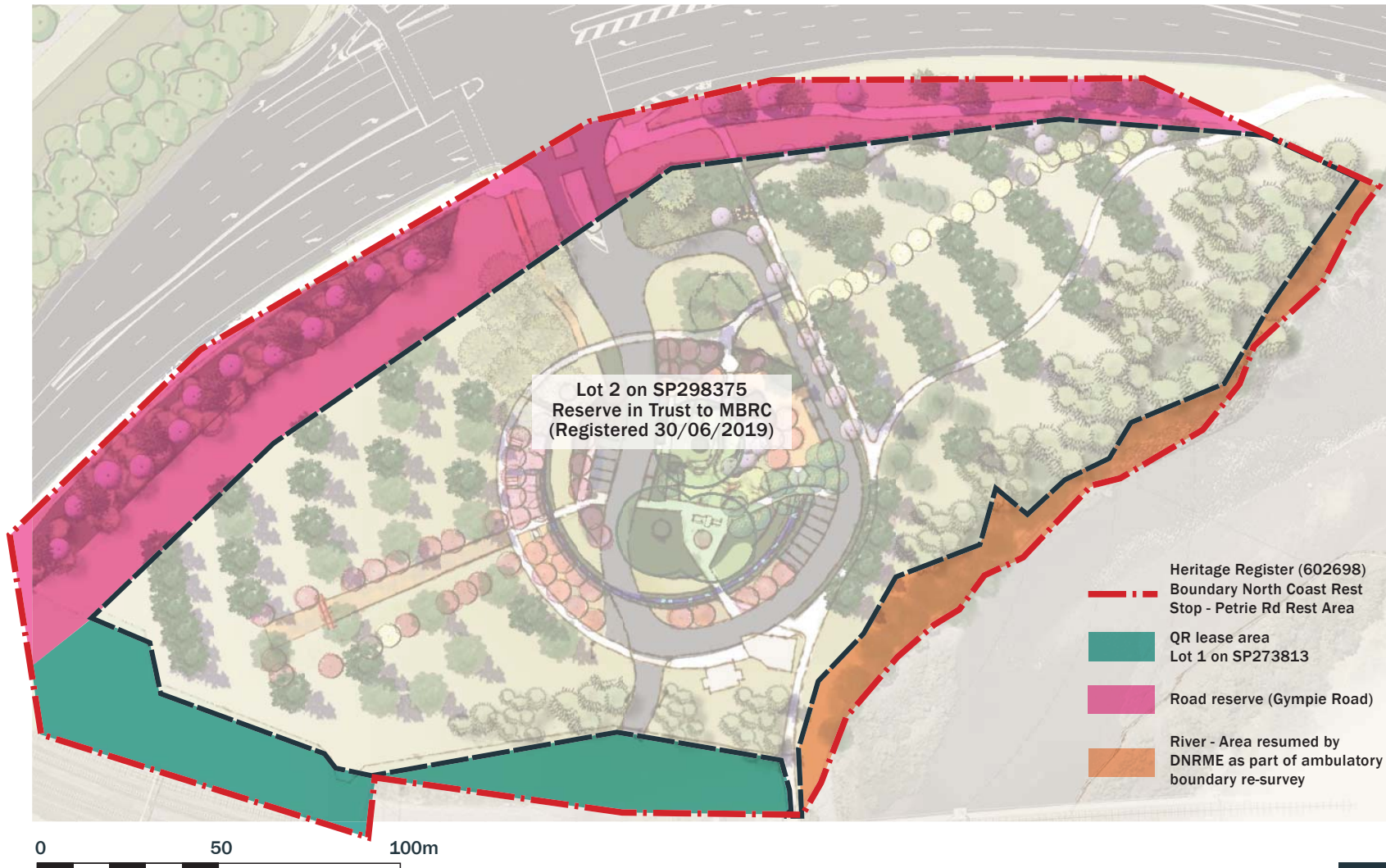
Existing and Proposed Services



ITEM 3.11 WYLLIE PARK - HERITAGE MASTER PLAN ENDORSEMENT - DIVISIONAL - A20069695 (Cont.)

MASTER PLAN BOUNDARIES

Boundaries associated with Wyllie Park



ITEM 3.11 WYLLIE PARK - HERITAGE MASTER PLAN ENDORSEMENT - DIVISIONAL - A20069695 (Cont.)



Moreton Bay Regional Council

PO Box 159
Caboolture
Queensland 4510

P | (07) 3205 0555
T | mbrc@moretonbay.qld.gov.au
W | www.moretonbay.qld.gov.au



ITEM 3.11 WYLLIE PARK - HERITAGE MASTER PLAN ENDORSEMENT UPDATE - DIVISIONAL (Cont.)

#2 Extract from Conservation Management Plan: Action Plan Table

The action plan applies to recommended actions identified in the Conservation Management Plan (CMP) for particular elements of Wyllie Park. It is noted that a master plan be completed in accordance with the CMP as a high priority.

Table 11: Action Plan

Element	Action	Priority	Approval process	Planning
<i>Riverbank stabilisation.</i>	Undertake appropriate riverbank stabilisation activities to ensure no further erosion of the park is experienced.	High	Exemption Certificate	Activities should be able to be managed within an Exemption Certificate Application to DES, assuming no impacts upon park elements.
<i>QHR boundary.</i>	Update QHR boundary to reflect reserve.	High	Correspondence to DES	Provide written correspondence to DES outlining the up to date requirements for QHR boundary for the reserve.
<i>Compete Masterplan.</i>	Compete Masterplan to manage proposed changes for the place.	High	TBC	Complete necessary Master Plan for Wyllie Park in accordance with this CMP.
<i>Update toilet block.</i>	Update toilet block to meet user needs and compliance obligations.	Moderate	Exemption Certificate	Activities should be able to be managed within an Exemption Certificate Application to DES, assuming the toilet is appropriately designed.
<i>Gas services.</i>	Rectify gas services within the reserve through relocation of services	Moderate	Exemption Certificate	Rectify gas mains in accordance with this CMP.

ITEM 3.11 WYLLIE PARK - HERITAGE MASTER PLAN ENDORSEMENT UPDATE - DIVISIONAL (Cont.)
#3 Extract from Heritage Master Plan Report: Site Understanding & Significance of Place



AERIAL PHOTOGRAPH 2019

foliage and floral trees



lush lawns



rough hewn timber



servicable paving



mature canopies



historic markers



Wyllie Park Heritage Master Plan: Design Rationale

ITEM 3.11 WYLLIE PARK - HERITAGE MASTER PLAN ENDORSEMENT UPDATE - DIVISIONAL (Cont.)

#4 Extract from Heritage Master Plan Report: Place Aspirations



Interpretation

Interpreting the many layers of this place through a physically expressed timeline. Mimicking the circularity of the design, the timeline will recall the key dates and characters influencing this place. The heritage values will be enhanced.



Reconstruction

The proposed design reinstates several of the iconic *Araucaria* and *Largostreomea* species in a circular formation. This will instil an inherent strength and presence seen from Gympie Road and enhance the ecological value.



Providing for the Future

Tech modernity meets the heritage values in provision for a travel rest stop of the future. Ensuring visitors can connect to the wider world and get to their next destination. Provision of facilities including toilets and other facilities.



Road Side Rest Reserve

A constellation of places set amongst mature and newly planted trees. Picnic spots, BBQs, tables, grassy lawns & playground where families can enjoy a rest together.

ITEM 3.11 WYLLIE PARK - HERITAGE MASTER PLAN ENDORSEMENT UPDATE - DIVISIONAL (Cont.)

#5 Extract from Heritage Master Plan Report: Concept Plan



ITEM 3.11 WYLLIE PARK - HERITAGE MASTER PLAN ENDORSEMENT UPDATE - DIVISIONAL (Cont.)

#6 Extract from Heritage Master Plan 3D Model: Interpretive Timeline



Looking south east to Interpretive Timeline & Gympie Road Beyond



Wyllie Park Heritage Master Plan: Interpretive Heritage Elements 3D Concepts

ITEM 3.11 WYLLIE PARK - HERITAGE MASTER PLAN ENDORSEMENT UPDATE - DIVISIONAL (Cont.)

#7 Extract from Heritage Master Plan 3D Model: Interpretive Entry Totems



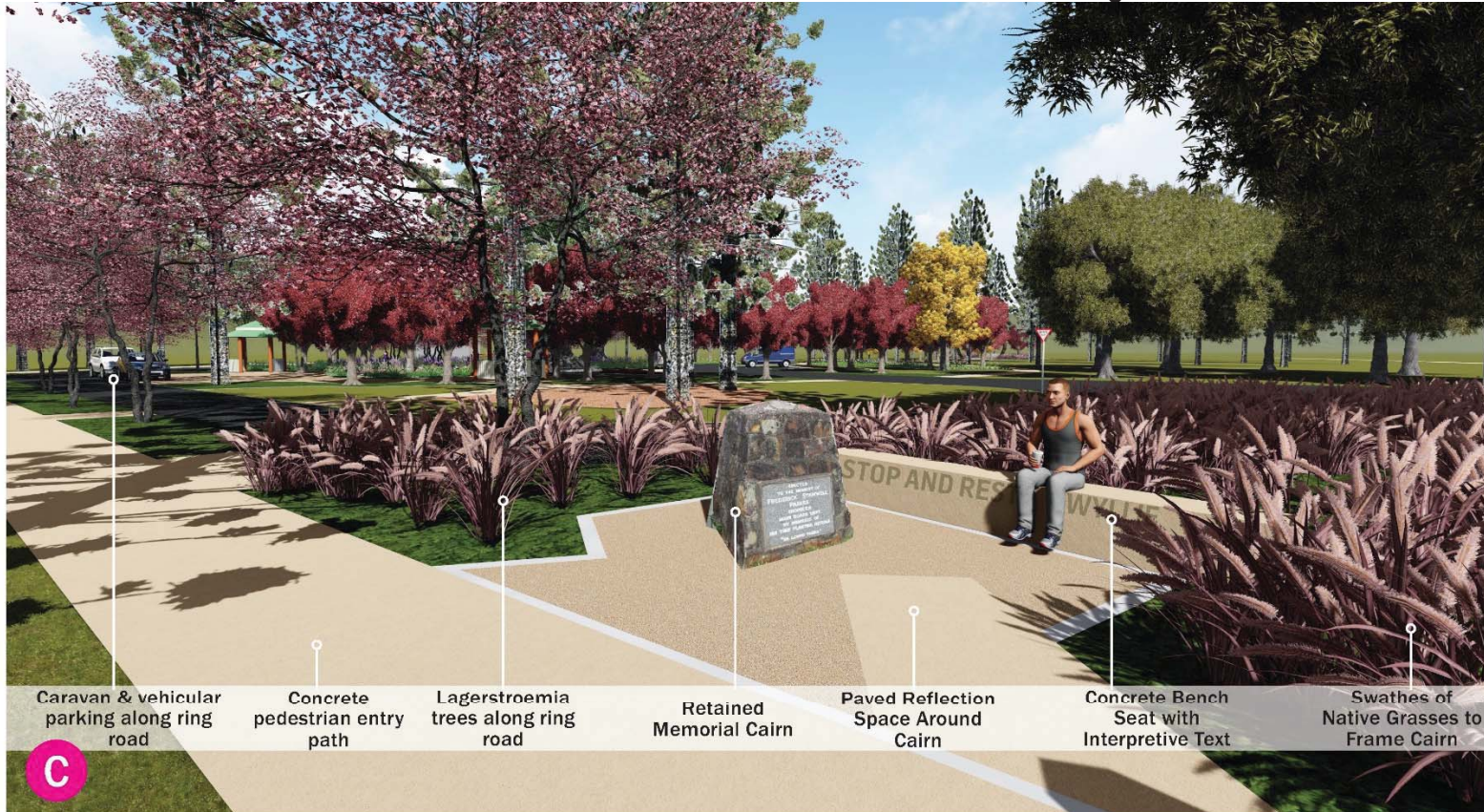
Looking west through Wyllie Park Entry Totems from Gympie Road Entry



Wyllie Park Heritage Master Plan: Interpretive Heritage Elements 3D Concepts

ITEM 3.11 WYLLIE PARK - HERITAGE MASTER PLAN ENDORSEMENT UPDATE - DIVISIONAL (Cont.)

#8 Extract from Heritage Master Plan 3D Model: Historic Stanwell Parkes Memorial Cairn Seating Node



Looking west to Stanwell Parkes Cairn & from Gympie Road Entry



Wyllie Park Heritage Master Plan: Interpretive Heritage Elements 3D Concepts

ITEM 3.11 WYLLIE PARK - HERITAGE MASTER PLAN ENDORSEMENT UPDATE - DIVISIONAL (Cont.)

#9 Extract from Heritage Master Plan 3D Model: Roadside Rest Stop Interpretive Structure & Reflection Seat



Looking north through Roadside Rest Stop Interpretive Structure towards Railway Line



Wyllie Park Heritage Master Plan: Interpretive Heritage Elements 3D Concepts

ITEM 3.11 WYLLIE PARK - HERITAGE MASTER PLAN ENDORSEMENT UPDATE - DIVISIONAL (Cont.)

#10 Queensland Heritage Council (QHC) Endorsement Letter - 19th December 2019

Level 27 400 George St, Brisbane QLD 4000
GPO Box 2454, Brisbane Queensland 4001
P 07 3330 5859
E heritage.council@des.qld.gov.au



QHC resolution no. 331.5 | EDQ ref. no. F18-9191 | MBRC ref. no. DA/36718/2018/V4D/1 | QHR place ID 602698

19 December 2019

Ms Lyndy Rapson
Manager
EDQ Development Assessment
Economic Development Queensland
Department of State Development,
Manufacturing, Infrastructure and Planning
Email: Lyndy.Rapson@dsdmip.qld.gov.au

cc Mr Wes Mortensen
Coordinator Park and Recreation Planning
Moreton Bay Regional Council
Email: Wes.Mortensen@moretonbay.qld.gov.au

Dear Ms Rapson

Re.: Final presentation of revised Heritage Master Plan for Wyllie Park, one of three of the North Coast Roadside Rest Areas.

I write on behalf of the Queensland Heritage Council (Heritage Council) to provide advice about the Heritage Master Plan for Wyllie Park (Petrie Road Rest Area), which is part of the place on the Queensland heritage register (QHR) called the North Coast Roadside Rest Areas. This advice relates to a condition of an approval for infrastructure works in The Mill at Moreton Bay Priority Development Area (EDQ approval reference no. F18-9191 & Moreton Bay Regional Council development application no. DA/36718/2018/V4D/1).

We would like to commend Moreton Bay Regional Council for its commitment to reviving the heritage values of Wyllie Park and thank its representatives and those from Australian Heritage Specialists for presenting at the meeting on 10 December 2019. The Heritage Council has resolved the following:

RESOLUTION NO. 331.5

The Queensland Heritage Council has considered the:

- covering report prepared by the Department of Environment and Science;
- Queensland Heritage Register entry for the North Coast Roadside Rest Areas;
- report prepared by the Department of Environment and Science for the 25 October 2019 Heritage Council meeting;
- 'Wyllie Park: Heritage Master Plan - Design Rationale', dated 26 November 2019 prepared by Moreton Bay Regional Council (MBRC);
- 'Wyllie Park: Heritage Master Plan: Interpretive Heritage Elements 3D Concepts';
- letter from Mr Wes Mortensen, Parks and Recreation Planning Manager MBRC to Ms Lyndy Rapson, Manager, Economic Development Queensland (EDQ) Development Assessment, dated 26 November 2019;
- 'Wyllie Park, Petrie, Conservation Management Plan' prepared by Australian Heritage Specialists Pty Ltd, dated February 2019;

ITEM 3.11 WYLLIE PARK - HERITAGE MASTER PLAN ENDORSEMENT UPDATE - DIVISIONAL (Cont.)

- advice letter from the Heritage Council to EDQ and MBRC, dated 6 November 2019; and
- presentation given at the 10 December 2019 Heritage Council meeting by MBRC representatives Mr Wes Mortensen, Coordinator Park and Recreation Planning and Ms Claud Bergs, Senior Urban Designer, and Ms Tania Metcher, landscape architect and heritage consultant, Australian Heritage Specialists Pty Ltd;

The Queensland Heritage Council resolves to advise MBRC and EDQ within the Department of State Development, Manufacturing, Infrastructure and Planning about the "Heritage Master Plan" for Wyllie Park (the Petrie rest area), which is part of the North Coast Roadside Rest Areas, a place on the Queensland heritage register. The "Heritage Master Plan - Design Rationale and Interpretive Heritage Elements 3D Concepts" is endorsed. EDQ should continue to work with the Department of Environment and Science to finalise any further details as required.

Should you or your officers have further questions about this advice, please contact Mr Charles Rowe, Senior Heritage Officer, Arts and Heritage, Department of Environment and Science on telephone (07) 3330 5026 or via email to charles.rowe@des.qld.gov.au.

Yours sincerely



Debbie Best
Chair