



Community News

Brought to you by Cr Sandra Ruck, Division 5



Creating a resilient city

Resilience starts with the community and once again City of Moreton Bay banded together to show its spirit in the face of a potential natural disaster.

While Tropical Cyclone Alfred didn't quite hit with the gusto that was initially forecast, we still received over 300 requests for fallen trees, there were 62,000 properties affected by power outages, over 120 roads were flooded, and 1,800 tasks were recorded with the Moreton Bay SES Unit.

It took a major effort from residents, emergency responders and Council staff working together to get the city ready to face the cyclone and then back on its feet as soon as possible.

Our Local Disaster Coordination Centre worked day and night to manage the preparation and response, while providing key information to the public and emergency services. Part of that included the distribution of over 3,000 tonnes of sand and over 300,000 sandbags in three days,

which is three times the amount we had ever gone through for a single weather event. We applaud everyone for their preparation, patience and understanding through such a stressful time.

Our City Flood Database and flood mapping was updated in late February, and was critical to accurately predict potential flooding around the city and send real-time messages through our MoretonAlert system.

Look out for our 'Know Your Risk' campaign, so you can understand your risk to floods, and update your emergency plans to prepare for the next flood event.

We'll be rolling out a number of projects and initiatives, all outlined in our Environment and Sustainability Strategy, over the coming years to continually build on our city's resilience to all natural hazards.



**Read this
newsletter online**

Issue 5 May 2025



THE LIVING CITY UPDATE With Mayor Peter Flannery

It's in times of disaster that you really understand just how resilient and supportive our community is. Tropical Cyclone Alfred tested us, but our community spirit shone through. Thank you to all of you, our residents, who worked alongside our emergency responders and the Council team to ready the city for the cyclone, and then again in the aftermath.

It was timely that our City Flood Database and flood mapping had only recently been updated, ensuring a more accurate response to potential flooding risk. This new flood mapping also means residents themselves can more easily access, and better understand, their own flood risk. Be sure to download your Flood Check Property Report and familiarise yourself with the Moreton Bay Flood Viewer.

We're also continuing to advocate to other levels of government for funding to support our city's growth, liveability, sustainability and resilience. As part of this, we're seeking \$30 million to build a new Local Disaster Coordination Centre in Petrie, which will better support first responders and communication during emergencies. You can read more about our priorities at moretonbay.qld.gov.au/matters

Know your risk

Know your flood risk

New flood mapping is now available, using updated data and technology for greater accuracy. Some areas now show higher or lower risk. Check your Flood Check Property Report and explore the Moreton Bay Flood Viewer to understand your risk.

moretonbay.qld.gov.au/knowyourrisk

Keep your pet's details up to date

Have you moved house in the past year? Has your cat or dog recently been desexed or microchipped or sadly passed away? Keeping your pet's registration details up to date ensures we maintain accurate records and helps us reunite you with your furry friend if they go missing.

Update your pet's details today at

moretonbay.qld.gov.au/animals

GO like a PRO!

Residential properties with a land size smaller than 300 or larger than 2,000 square metres can now apply to opt in to the GO service. Additional GO bins can also be requested. Remember, only garden organics material is accepted in your GO bin. Please ensure no contamination of any kind is disposed into your bin. For more info or to apply visit moretonbay.qld.gov.au/GO

Hints to keep your bin as fresh as possible

- Line your bin with leaves or sticks first and add lawn clippings last.
- Put your bin out for collection every fortnight. This reduces odour!
- Mow your lawn as close to bin collection day as possible.



This initiative is supported by the Queensland Government's Recycling and Jobs Fund



City of Moreton Bay calls for road infrastructure

City of Moreton Bay has called for a serious look at long term transport infrastructure needs to meet the City's growing population, including connectivity to the state-of-the-art Moreton Bay Indoor Sports Centre (MBISC), for the Brisbane 2032 Olympic and Paralympic Games. Commitment to critical connectivity and infrastructure should remain a priority.

We are urging the prioritisation of key public transport and road projects in our city such as the Bruce Highway Western Alternative and additional bridges at the Pine River Crossing, and deliver on previous commitments to enable additional connections and mobility across the south-east. This will alleviate gridlock during the Games, while also reducing congestion on the Bruce Highway.

Integrated public transport should also be an urgent focus to ensure effective movement between venues during 2032, while also meeting the long-term needs of our growing population.

City of Moreton Bay is already home to world-class sporting infrastructure, and our reputation for tourism is booming with more than 4.3 million annual visitors contributing more than \$2 billion into our economy.

MBISC is the most advanced venue in terms of planning and is shovel-ready, with dedicated rail connections in place. But alongside venue delivery, it is essential to commit to long-term transport infrastructure promised as part of the Games. City of Moreton Bay looks forward to working with the State Government to ensure critical transport infrastructure meets the needs of our growing population—especially with public transport expected to handle 90% of the Games' transport demand.



Kairos Community College

Head of Campus, Kelly Chambers and Diverse Learning and Pathways Coordinator, Darren Freeman, attended the Redcliffe Chamber of Commerce's first meeting for 2025.

The College is reaching out for support from the local community on behalf of their Year 11 and 12 students for school-based apprenticeships, traineeships, work experience and volunteering opportunities. If you are aware of any businesses/companies that may have opportunities or organisations that require student volunteers, please contact the college. The College is also undertaking works associated with upgrading the balcony area. Any assistance regarding funding, sponsorships and grants would be most appreciated.

Kairos College is celebrating its 10-year anniversary this year which is exciting and a huge milestone for the school.

Double win at the Snap Send Solve Awards!

City of Moreton Bay is proud to be recognised once again for its commitment to accessibility and community service at the 2024 Snap Send Solve Awards!

For the second year in a row, City of Moreton Bay has been awarded Queensland's 'Inclusive Excellence Award', achieving a 94.9% solve rate for accessibility-related issues. Council also received Queensland's coveted 'Snappers Choice Award', as voted by thousands of app users for delivering overall best service.

The Snap Send Solve app allows users to snap a photo of an issue and send it directly through to Council. The app can be used to report issues such as graffiti, dumped rubbish, fallen tree branches and accessibility concerns.

Download the free app at moretonbay.link/mobile-apps

Volunteer with Council

Becoming a volunteer is a great way to meet new people, learn new skills, gain valuable job experience, and make a difference in City of Moreton Bay.

We have a range of volunteer opportunities available to choose from to suit your lifestyle. Opportunities include getting involved in our Bushcare program or helping as a grounds or engagement volunteer at our Environment Centres.

To find out more information on how you can get involved, visit moretonbay.qld.gov.au/Council/Volunteers

New plan to boost local jobs for City of Moreton Bay

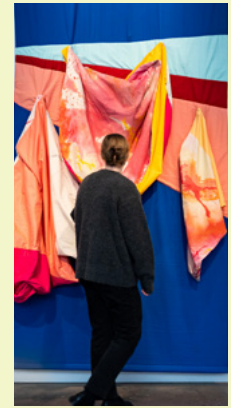
City of Moreton Bay plans to transform parts of Narangba East into a major employment precinct with up to 10,500 new local jobs to support the city's growing population and ease industrial land shortages in South East Queensland. The State Government's ShapingSEQ plan outlines that City of Moreton Bay must accommodate 125,800 new homes and a minimum of 85,400 new jobs by 2046. We currently have 12 major growth fronts across the city to address the new homes aspect, but we've started to fall behind on our targets for new jobs.

Our latest data shows that we're currently being forced to turn away 60% of industrial land enquiries due to a lack of available land for these uses. It also shows that 80,000 City of Moreton Bay residents currently commute outside of the city for work every week, and we want to give those people the opportunity to work closer to home. This means we need to act quickly to unlock industrial land so developers, small businesses, investors and big businesses all have opportunities to grow within City of Moreton Bay. An additional 25,400 jobs and \$9 billion of economic value would be created by 2056, if we met our industrial land targets. Unlocking more land will create more jobs for the city. Narangba East and Narangba Innovation Precinct are perfectly located for business, being in the centre of our city and having quick access to the Bruce Highway.

A Planning Scheme amendment has been proposed for the Narangba Innovation Precinct (east of the Bruce Highway), which will consolidate four years of extensive environmental health and economic investigations. Land that has environmental value, such as the area north of the Narangba Innovation Precinct, will remain untouched by the proposed Planning Scheme amendment.

The Redcliffe Art Gallery hosted the **52 Actions** exhibition recently. This wonderful exhibition was developed and curated by Artspace, Sydney and is touring nationally with support from Museums & Galleries of NSW and funded by the NSW Government.

Image: installation shot of Rochelle Haley, *Like Nobody's Watching* 2021, Photographed by Louis Lim.



Australia Day Citizenship Ceremony & Australia Day Awards

We welcomed 453 new citizens who call City of Moreton Bay home on Australia Day. Tracy Lech established Salt No Limits Inc in Redcliffe 20 years ago and was awarded the Mayor's Community Spirit Award on the day (pictured with Cr Winchester, Kerri-Anne Dooley MP & myself).

Redcliffe Peninsula Chamber of Commerce

held its first meeting for 2025 with guest speaker COO Dolphins NRL, Damien McDowell, President Cameron Whinnett and State Member for Redcliffe Kerri-Anne Dooley.



Annual **Redcliffe Tigers AFC** sign on day - a great day of family fun activities. Meet Amy who has signed up for her 5th season in the Senior Women's team. Mia might just follow in her mum's footsteps in the near future.



Apply for a free native plant voucher

City of Moreton Bay's community nurseries grow local flora for planting in reserves, parks, schools, and public spaces. They are open to the public, with a range of native plants for sale.

Council provides one free native plant voucher to residential property owners each financial year.

You can use your voucher for one of the following:

- four tube stock pot plants
- two plants in medium-sized pots
- one plant in a large pot.

Pot sizes and the types of plants available will vary at each nursery. Nursery staff can help you with your selection when you redeem your voucher.

To apply for a native plant voucher contact Council or visit

moretonbay.qld.gov.au/community-nurseries

Redcliffe Botanic Gardens Community Nursery is close to Division 5, located on Henzell Street, Redcliffe.

The nursery is open Tuesday, Thursday, and Saturday.

1 October to 30 April: 8 am to 10 am.

1 May to 30 September: 8:30 am to 10:30 am.

Public holidays may affect opening hours.

To confirm stock and public holiday trading hours contact The Friends of the Redcliffe Botanic Gardens at: **facebook.com/friendsofrbg**

If you enjoy gardening, why not reach out and join this wonderful group of volunteers.

It's time to talk about growth

City of Moreton Bay is forging ahead with its plans to minimise urban sprawl and protect its rural and natural spaces, while meeting demands for housing supply. Under the ShapingSEQ plan, City of Moreton Bay must plan for an additional 308,300 people and 125,800 extra homes by 2046 to meet growing housing supply demands and tackle the housing crisis locally.

We need to find places to house those people without encroaching on the beautiful rural and natural spaces that make City of Moreton Bay a desirable place to live. Residents have told us that it's important to maintain a sense of community as our population grows, while also supporting higher density living in the right locations.

We also need assistance from both the State and Federal Governments to assist in providing funding for critical infrastructure, so we can continue to meet our housing supply needs.

Housing diversity is important because it creates more options for different stages of life. This means residents can stay in their neighbourhood for longer and children will have options to buy their first home nearby instead of needing to move further from their families and support network. Higher density living would provide more options to the community and it would support our goal to preserve 75% of the city as rural and natural spaces. We understand this will be a big change for some residents, but it's also a huge opportunity to improve liveability for locals in the long run.

Higher density living promotes more shops, services, nightlife, cultural experiences, events, parks, and playgrounds all within a closer proximity to your home. It encourages healthier lifestyles by giving residents the option to walk, cycle or catch public transport to those services, which in turn takes cars off our roads.



Reconciliation Week

**27 May - 3 June:
Culture, stories and painting**

Celebrate Reconciliation Week by joining Lauren Rogers, a local contemporary First Nations artist from the Ngarabul nation and Torres Strait Islands as she shares the culture and stories of her heritage through her paintings. Lauren will assist you in creating your own artwork using botanical flowers as inspiration. For adults.

Saturday, 31 May | 9 am to 10:30 am

Deception Bay Library

moretonbay.qld.gov.au/libraries

WHAT'S ON

Deception Bay Library

National Simultaneous Storytime

Wednesday 21 May

11 am - 11:30 am

Story Dogs

Thursday 22 May

3:30 pm - 4:30 pm

Bucket drumming workshop

Wednesday 18 June

3 pm - 4 pm

Playtime

Mondays and Thursdays

10:30 am - 11 am

Redcliffe Library

Baby Rhyme Time

Mon, Tue, Thu, Fri, Sat

9:30 am to 10 am

Lego Engineers Club

Tuesdays 3:30 pm to 4:30 pm

STEAM Station

Wednesdays, 3:30 pm to 4 pm

moretonbay.qld.gov.au/libraries

libraries

Anywhere Festival

The fifth annual Anywhere Festival Moreton Bay will be taking over the nooks and crannies of City of Moreton Bay in May.

8 - 25 May

Various locations

moretonbay.qld.gov.au/Anywhere-Festival

Anywhere-Festival

Make Music Month

Each June, we turn up the volume at our galleries, museums, libraries and beyond with a month-long music trail. Enjoy free events, live performances, jam sessions, workshops, and more, as we put music on the map in Moreton Bay!

1 - 30 June | Various locations

moretonbay.link/makemusicmonth

**MAKE
MUSIC
MONTH**
1 - 30 June 2025



Jazz & Shiraz

Dive into great tunes and tasty vino at Jazz & Shiraz with live local music, and a licensed bar.

Saturday 7 June

1 pm - 5 pm

Newport Park, Newport

moretonbay.qld.gov.au/community-events-calendar



Cr Sandra Ruck

Division 5

T 3283 0410

E Sandra.Ruck@moretonbay.qld.gov.au



T 3205 0555

E council@moretonbay.qld.gov.au