

Welcome to

# BRIBIE ISLAND SEASIDE MUSEUM

## A Social Guide



We can read this story as we get ready for our trip to Bribie Island Seaside Museum.

In this story we will learn about what we can find inside the museum and about some of the people who work there and can help with our visit.

Bribie Island Seaside Museum celebrates the story of Bribie Island and the people who have lived here. Inside we will find lots of objects and photographs that relate to the history of the area, some of which are very old! There are also movies to watch and lots of places to sit and relax around the museum.

## ENTERING THE MUSEUM

Entry is free.

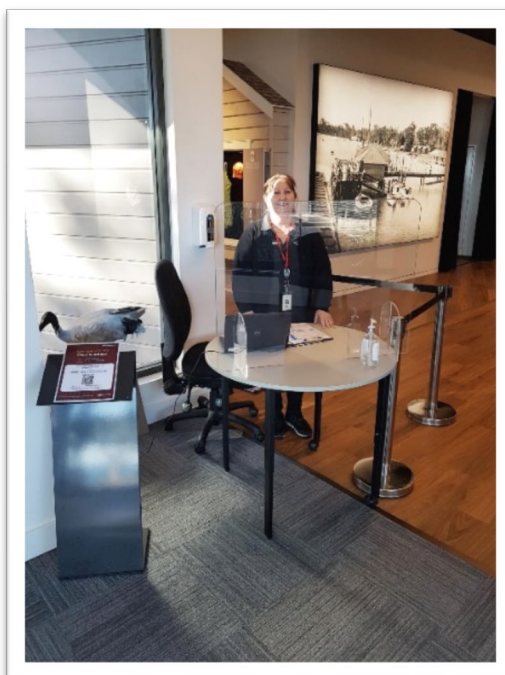
We are welcome bring along anything we need to help us feel more comfortable and relaxed, such as noise reducing headphones, hand fidgets and sunglasses.

At the front of the museum there are stairs and a wheelchair-friendly ramp leading to the sliding door entry.



We don't need to book to visit the museum. But sometimes on busy days (usually Sundays) the museum occasionally fills to capacity and we might have to wait a little while before we can go in.

When we enter the museum we will stop in the foyer and check in to the venue using the Check-In QLD app (as per COVID health guidelines), but this won't take long.



When we enter the museum, it may be a little noisy in the foyer area if there are a lot of people. There are quieter spaces as we move around the museum.

The museum is not very big, so we don't need a map.

Inside, we will see friendly employees who wear black uniforms with name badges or ID cards on. They will say hello and help with any questions we have.



Low sensory hour is every third Thursday of the month, 10:00 AM to 11:00 AM.

### **MOVING AROUND THE MUSEUM**

While we move around the museum, we should not touch anything because a lot of objects are very old. We will see some signs like this reminding us not to touch:



The museum is all on one level, the floor is flat and wide. It is easy to walk on or use a wheelchair on. We will walk through the museum, not run, so that we don't hurt ourselves or anyone else.

We cannot eat or drink in the museum.



If we can't find our family or friends, we should return to the front desk and talk to a staff member. They will help us find our family or friends if we tell them we need help.

We can collect a Museum Object Search from the staff at the front desk. We can tick off items we find in the museum as we move around.



The staff will recommend we start our journey around the museum by turning left when we enter. This is because the museum is set out thematically and it starts to the left, but it is also to assist with people moving one way to help with COVID safe guidelines.

## COVID-19 AND THE MUSEUM

We will find hand sanitiser available around the museum that we can use, and we must use hand sanitiser before touching anything.



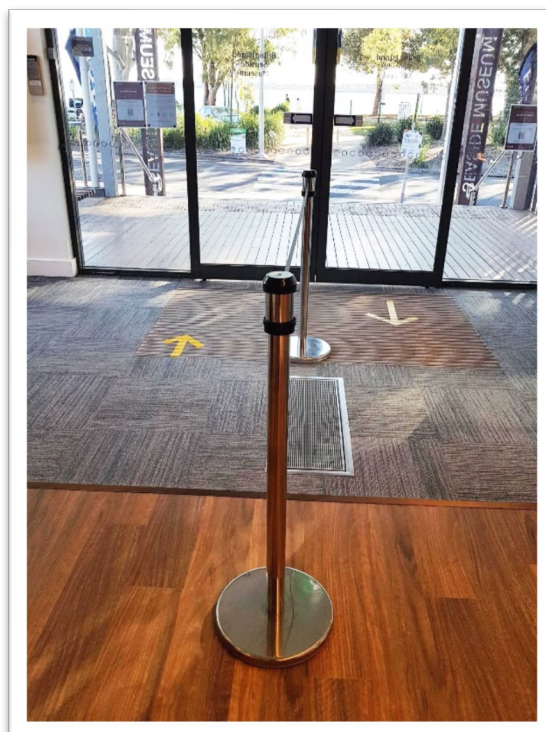
The museum staff regularly clean the museum, we may see them cleaning during our visit.



We will maintain 1.5m distance from other people.

There are clear screens at some of the counters in the museum, this is so we can hear and see people, but the screens help protect us so that germs aren't spread easily.

There are bollards and direction arrows at the entry door to help with people knowing which way to move in and out of the building.



We might need to wear a mask when we visit the museum, depending on QLD Health guidelines. If we're exempt from wearing a mask that's ok too. The staff will be wearing masks when required.

These things will help keep me safe when I visit the museum.

## EXPLORING THE MUSEUM



### Going Away

The first section of the museum we will see information on what people did when they visited Bribie Island in the past. There are no sounds or movement in this area.



### Bribie Island history

This section contains information and photos on the walls, and some objects in cases including large whale bones. There are no sounds or movements in this area, but there is bright lighting and a that changes colours shining on a dugong that hangs from the ceiling.



### Fish specimens

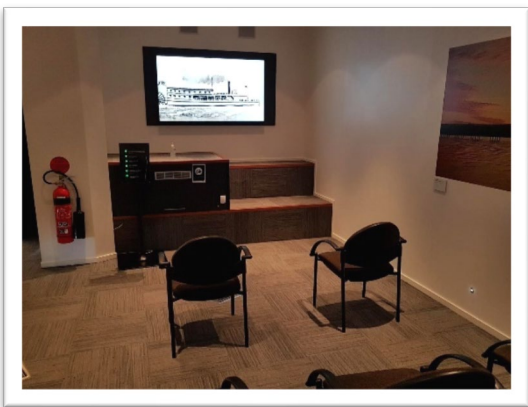
This area is a large display of fish specimens in glass bottles. The fish are no longer alive. There are many interesting fish to look at. There is nothing in this display that moves but there are bright lights shining on the fish.



### The Koopa

There is a large ship model on the wall. Sometimes it makes sounds of a ship horn or people talking. These sounds are turned off during low sensory hour.

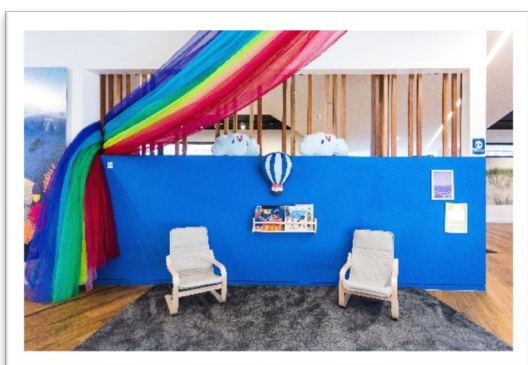




### Theatre

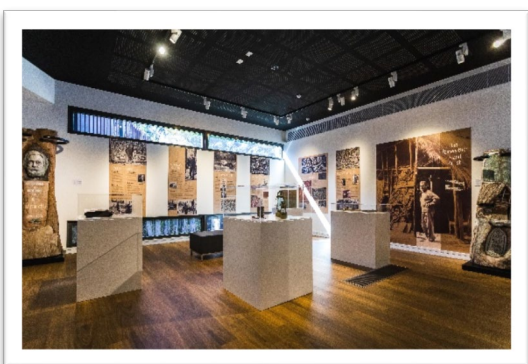
When we enter this room we will see a panel with buttons where we can pick from films to watch. Some of the films have music and people talking, one of the films is silent. If we want the room brighter we can ask a staff member at the front desk to help. The volume can also be turned up or down by a staff member.

During low sensory hour the television in the theatre will be turned off. If we want it turned on we can ask a staff member.



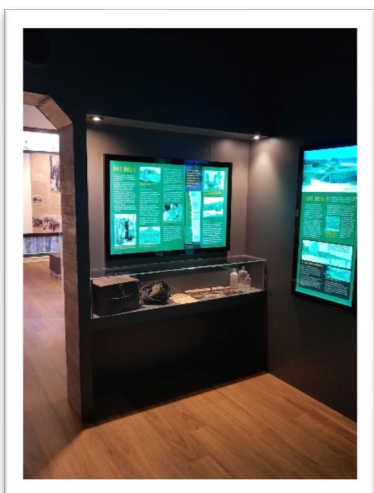
### Kids area

This area changes sometimes. It has a blue wall and sometimes has books we can sit and read.



### Ian Fairweather

This section of the museum is about an artist who lived on Bribie Island. It has objects in cases and photos and text on the walls.



### Bunker

This area of the museum is a small space and is quite dark. There are sounds of the ocean and a submarine playing in this space. These sounds will be turned off during low sensory hour.

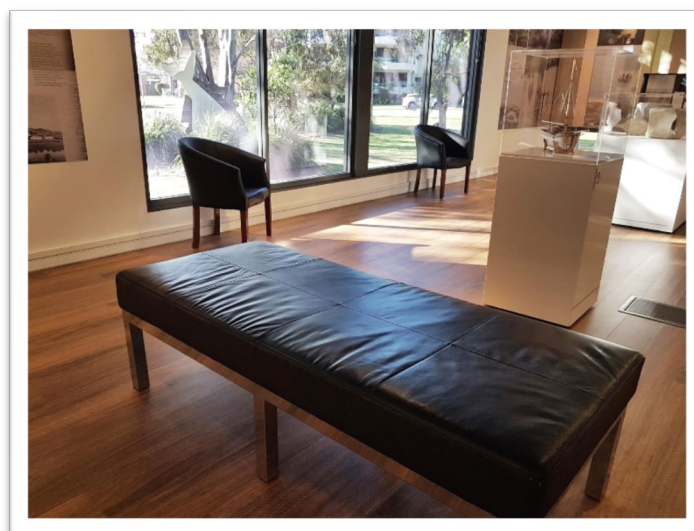


### Temporary exhibition space

This area of the museum changes regularly. If we want to know what is happening in this space before our visit we can call the museum and ask. The staff will tell us what to expect in this space. Sometimes there are TV screens playing slideshows of photos, sometimes there are things making noise. These will be turned off during low sensory hour.

### RESTING

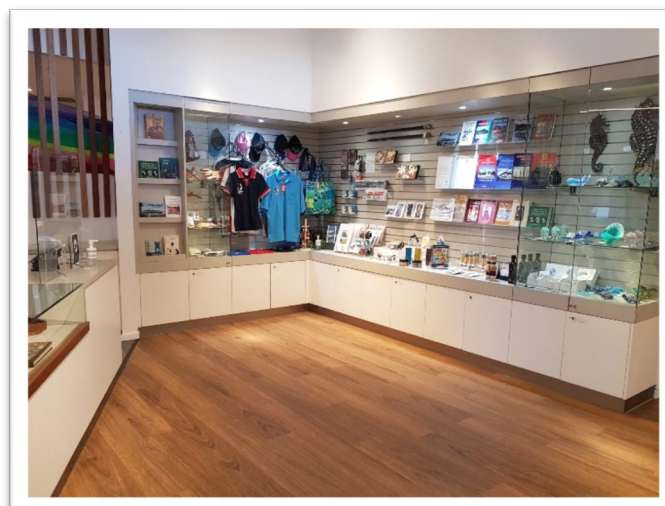
We will find seats around the museum where we can stop to rest.



### THE SHOP

The shop has things we can buy. It has books, jewellery, souvenirs, native ingredients, toys and homewares. Many of the items are made by local artists.

If we want to buy something the staff members can help us.

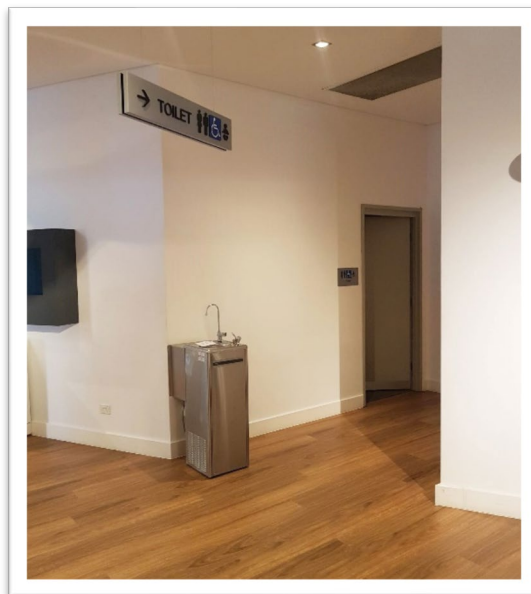




If we want to avoid the shop, we will exit the museum by walking through the centre of the building.

### AMENITIES

If we need to use the bathroom we can find it at the back of the museum behind the front desk. The bathroom is accessible. I can ask a staff member to show me where the bathroom is.



We can choose to use paper towel or the hand dryer in the bathroom to dry our hands. The hand dryer is loud, I can use the paper towel if we prefer.

### EXIT

When we are ready to leave, we can ask a staff member for a guide that will tell us what exhibitions and events are coming up at this museum and other Moreton Bay Regional Council museums and galleries.

We will exit the museum through the same door that we came in.

We had a great time visiting Bribie Island Seaside Museum and look forward to visiting again!

### MORE INFORMATION

Everyone is welcome at Bribie Island Seaside Museum. We offer a variety of free programs to make the museum more accessible to you. Visit our website to find out more about our programs and events.

## THINGS TO DO

Some of the fun things we can do at this museum are:

**Exhibition openings:** these are when the museum celebrates a new exhibition with morning or afternoon tea, guest speakers and other events depending on what it is about.

**Workshops:** There are different workshops organised for adults and children throughout the year.

**Talks:** The museum likes to invite experts to come to the museum and discuss different topics related to the exhibitions.

**Group tours:** The museum caters for groups to have tours of the museum and the temporary exhibition space.

We can ask the staff members for more information about any of these events. We can also tell the staff member if there are things we think they could do to help us in the future.

## CONTACT US

Bribie Island Seaside Museum

Phone: (07) 5433 2596

Email: [seaside.museum@moretonbay.qld.gov.au](mailto:seaside.museum@moretonbay.qld.gov.au)

Address: 1 S Esplanade, Bongaree QLD 4507

Website: <https://www.moretonbay.qld.gov.au/Galleries-Museums/Locations/Seaside-Museum>